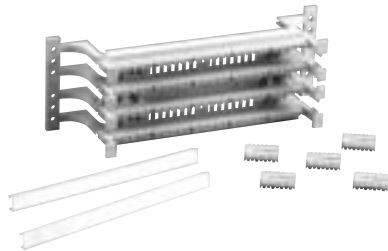


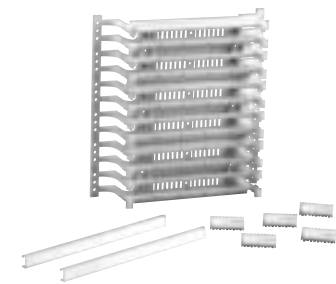
110 Cross-Connect System

110 Cross-Connect Kits, 110 Connecting Blocks, 110 Wall Mount Frame Kits and 110 Wiring Blocks

AX100694 110 Cross-Connect Kit, 100-pair

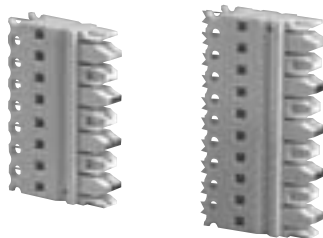


AX100696 110 Cross-Connect Kit, 300-pair

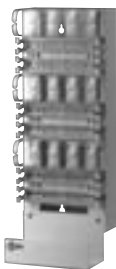


AX100707 110 Connecting Block, 4-pair

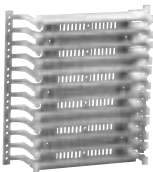
AX100708 110 Connecting Block, 5-pair



AX100697 110 Wall Mount Frame Kit, 300-pair



AX100692 Wiring Block, 300-pair



AX100691 Wiring Block, 100-pair



110 Cross-Connect Kit

110 Cross-Connect Kits contain all material required to terminate distribution or equipment cables into a 110 Cross-Connect System. Kits consist of one Wiring Block (100-pair or 300-pair) with legs, Connecting Blocks (4-pair or 5-pair), Designation Strips and Labels.

110 Connecting Block

The **110 Connecting Blocks** are modular connectors equipped with double-sided Insulation Displacement Connection (IDC) clips that are used to terminate plastic insulated solid copper conductors in 110 Wiring Blocks. The color-coded connecting blocks are available in 4-pair and 5-pair configurations. These blocks are compatible with other existing 110 Cross-Connect Systems.

110 Wall Mount Frame Kit

110 Wall Mount Frame Kits simplify planning, organizing and implementation of wall mounted cross-connect systems. They are available in 300-pair and 900-pair configurations making them ideal for small telecommunications room installations. Kits consist of wiring blocks and cable management troughs to be mounted on a cable channel. Kits include all components required to complete a 110 Cross-Connect installation with either 4-pair or 5-pair connecting blocks.

110 Wiring Block

110 Wiring Blocks are rigid plastic indexing strip assemblies designed to hold and align wires prior to terminating 110 Connecting Blocks. 110 Wiring Blocks are available in 100-pair and 300-pair configurations with legs and 100-pair without legs. 110 Wiring Blocks are compatible with 22 to 26 AWG wires and accept 4-pair or 5-pair Connecting Blocks. They are specially designed to simplify data cabling installations. A deeper channel and open slots in the base allow cable to be brought close to the termination point. These blocks are compatible with other existing 110 Cross-Connect Systems.

Description	Belden Part Number
110 Cross-Connect System	
110 Cross-Connect Kit	
110 Cross-Connect Kit, 100-pair, with 4-pair Connecting Blocks	AX100693
110 Cross-Connect Kit, 100-pair, with 5-pair Connecting Blocks	AX100694
110 Cross-Connect Kit, 300-pair, with 4-pair Connecting Blocks	AX100695
110 Cross-Connect Kit, 300-pair, with 5-pair Connecting Blocks	AX100696
110 Connecting Block	
110 Connecting Block, 110C4, 4-pair	AX100707
110 Connecting Block, 110C5, 5-pair	AX100708
110 Wall Mount Frame Kit	
110 Wall Mount Frame Kit, 300-pair, with 4-pair Connecting Blocks	AX100697
110 Wall Mount Frame Kit, 300-pair, with 5-pair Connecting Blocks	AX100698
110 Wall Mount Frame Kit, 900-pair, with 4-pair Connecting Blocks	AX100699
110 Wall Mount Frame Kit, 900-pair, with 5-pair Connecting Blocks	AX100700
110 Wiring Block	
110 Wiring Block, 100-pair, without legs	AX100690
110 Wiring Block, 100-pair, with legs	AX100691
110 Wiring Block, 300-pair, with legs	AX100692

The 110 Cross-Connect System is not available in all countries.

These products are in the process of being assessed for RoHS compliance. Please check our Web Site for the most current RoHS status.

110 Cross-Connect System

110 Designation Strip and Management Accessories

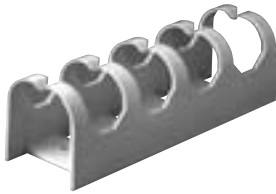
AX100721 110 Designation Strip



110 Designation Strip

The **110 Designation Strip** is designed to be used in conjunction with all 110 Wiring Blocks. It snaps in between two rows of 110 Connecting Blocks and provides space to insert a designation label. The strip is made of clear PVC.

AX100705 Cable Management Trough



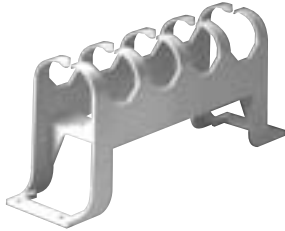
110 Management Accessories

Cable Management Troughs are utilized as channels positioned between wiring blocks for horizontal or vertical dressing of cross-connect wires and patch cords. They are available with and without mounting legs.

Cable Management Rings are used for management of cross-connect wires and cables in 110 Cross-Connect Systems. They can be mounted directly onto a plywood backboard between columns of wiring blocks. They are available in two different sizes.

Wall Mount Cable Management Frames are pre-assembled vertical cable managers that are used between 110 Wall Mount Frame Kits for vertical management of patch cords. They simplify planning and installation of 110 Cross-Connect Systems. They are available in two sizes to use with 300-pair and 900-pair Wall Mount Frame Kits.

AX100706 Cable Management Trough with Legs

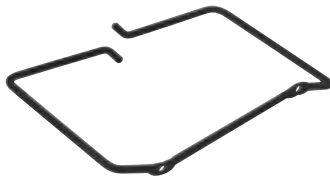


Description	Belden Part Number
-------------	--------------------

110 Cross-Connect System

110 Designation Strip	
110 Designation Strip	AX100721
110 Management Accessories	
Cable Management Trough, without legs	AX100705
Cable Management Trough, with legs	AX100706
Cable Management Ring, Small 144.8 mm (5.7 in.)	AX100703
Cable Management Ring, Large 216 mm (8.5 in.)	AX100704
Wall Mount Cable Management Frame, 300-pair	AX100701
Wall Mount Cable Management Frame, 900-pair	AX100702

AX100703 Cable Management Ring



The 110 Cross-Connect System is not available in all countries.

These products are in the process of being assessed for RoHS compliance. Please check our Web Site for the most current RoHS status.

AX100701 Wall Mount Cable Management Frame, 300-pair



110 Cross-Connect System

110 Patch Cords

AX300001 PS5E 110 Patch Cord, 110-110, 4-pair



AX300010 PS5E 110 Patch Cord, 110-8MOD, 4-pair



AX300013 110 Patch Cord, 110-110, 2-pair



110 Patch Cord

110 Patch Cords allow for high density connections in a 110 Cross-Connect System. 110 Patch Cord rearrangements do not require any special tools or training thus providing flexibility for cost-effective installation and administration. 110 Patch Cords are available in two different configurations. 110-110 patch cord configurations are used for easy cross-connection between equipment and distribution fields.

110-8MOD patch cord configurations are used to easily interconnect equipment utilizing 8-position modular jacks directly into 110C4/C5 connecting blocks in the distribution field. PS5E 110 Patch Cords offer Category 5e performance. These patch cords are compatible with other existing 110 Cross-Connect systems.

110 Patch Cord Connector

110 Patch Cord Connectors are available in 1, 2 and 4-pair configurations for field assembly of Category 5 patch cords. They can terminate plastic insulated stranded copper conductors 24 AWG.

Description	Belden Part Number
110 Cross-Connect System	
110 Patch Cord	
110 Patch Cord, PS5E 110-110, 4-pair, 1.2 m (4 ft.)	AX300001
110 Patch Cord, PS5E 110-110, 4-pair, 1.8 m (6 ft.)	AX300002
110 Patch Cord, PS5E 110-110, 4-pair, 2.4 m (8 ft.)	AX300025
110 Patch Cord, PS5E 110-110, 4-pair, 3.0 m (10 ft.)	AX300026
110 Patch Cord, PS5E 110-110, 4-pair, 6.1 m (20 ft.)	AX300027
110 Patch Cord, PS5E 110-8MOD, 4-pair, T568A, 1.2 m (4 ft.)	AX300010
110 Patch Cord, PS5E 110-8MOD, 4-pair, T568A, 1.8 m (6 ft.)	AX300009
110 Patch Cord, PS5E 110-8MOD, 4-pair, T568A, 2.4 m (8 ft.)	AX300029
110 Patch Cord, PS5E 110-8MOD, 4-pair, T568A, 3.0 m (10 ft.)	AX300030
110 Patch Cord, PS5E 110-8MOD, 4-pair, T568A, 6.1 m (20 ft.)	AX300032
110 Patch Cord, PS5E 110-8MOD, 4-pair, T568B, 1.2 m (4 ft.)	AX300008
110 Patch Cord, PS5E 110-8MOD, 4-pair, T568B, 1.8 m (6 ft.)	AX300005
110 Patch Cord, PS5E 110-8MOD, 4-pair, T568B, 2.4 m (8 ft.)	AX300011
110 Patch Cord, PS5E 110-8MOD, 4-pair, T568B, 3.0 m (10 ft.)	AX300034
110 Patch Cord, PS5E 110-8MOD, 4-pair, T568B, 6.1 m (20 ft.)	AX300017
110 Patch Cord, 110-110, 2-pair, 1.2 m (4 ft.)	AX300013
110 Patch Cord, 110-110, 2-pair, 1.8 m (6 ft.)	AX300014
110 Patch Cord, 110-110, 2-pair, 2.4 m (8 ft.)	AX300015
110 Patch Cord, 110-110, 2-pair, 3.0 m (10 ft.)	AX300037
110 Patch Cord, 110-110, 2-pair, 6.1 m (20 ft.)	AX300038
110 Patch Cord, 110-110, 1-pair, 0.6 m (2 ft.)	AX300039
110 Patch Cord, 110-110, 1-pair, 1.2 m (4 ft.)	AX300006
110 Patch Cord, 110-110, 1-pair, 1.8 m (6 ft.)	AX300007
110 Patch Cord, 110-110, 1-pair, 2.4 m (8 ft.)	AX300012
110 Patch Cord, 110-110, 1-pair, 3.0 m (10 ft.)	AX300021
110 Patch Cord, 110-110, 1-pair, 6.1 m (20 ft.)	AX300040
110 Patch Cord Connector	
110 Patch Cord Connector, 4-pair	AX100711
110 Patch Cord Connector, 2-pair	AX100710
110 Patch Cord Connector, 1-pair	AX100709

The 110 Cross-Connect System is not available in all countries.

Other lengths are available, please contact Customer Service for further details.

These products are in the process of being assessed for RoHS compliance. Please check our Web Site for the most current RoHS status.