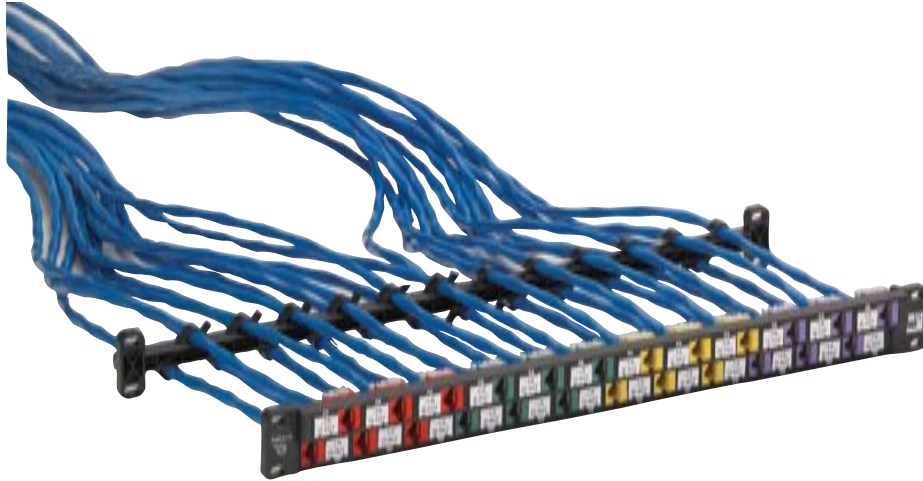


TrueNet®

CopperTen™ Augmented Category 6 Patch Panels



An integral part of ADC's TrueNet® Structured Cabling System, CopperTen™ is the world's first UTP structured cabling system to enable 10 Gigabit Ethernet over a full 100 meters. Installed in high-performance networks worldwide, the system's patent-pending design minimizes alien crosstalk and insertion loss and meets the performance requirements of IEEE 802.3an and TIA 568-B.2-10 draft standards.

The CopperTen patch panel is a modular design that features offset jack positioning to counter the negative effects of alien crosstalk; critical for 10 Gigabit Ethernet performance.

Features:

- UL 1863 listed
- Rear cable manager included
- High-density design with 24-ports in a single rack unit
- Unique polymer design helps eliminate alien crosstalk
- 1RU 24-port high-density panel available loaded or unloaded

SPEC SHEET



www.adc.com • +1-952-938-8080 • 1-800-366-3891

Specifications

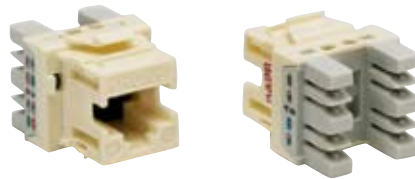
| | |
|-------------------------------------|---|
| Operating Temperature Range: | -10° to 70 °C (14° to 158 °F) |
| Material Construction: | Molded glass filled PPS (polyphenylene sulfide) |
| Color: | Black |
| Dimensions: | 44.45 mm x 482.6 mm x 39.6 mm (1.75" x 19" x 1.56") |
| Safety Rating: | UL 1863 |
| Flammability Rating: | UL 94 V-0 |

Ordering Information

| Description | Ordering Number |
|---|-------------------|
| Patch Panel | |
| 24-port patch panel 1RU unloaded | TPNP-NNC10-NN |
| 24-port patch panel 1RU loaded with black CopperTen Jacks | TPNP-24NC10-BK |
| CopperTen Jacks (individual) | |
| RJ45 UTP modular 568A/B jack | 6830 1 835-XX |
| Termination Puck | |
| For easy termination of CopperTen jacks | 6645 1 180-04 |
| Wire Management Bracket for Cabinets in Data Center Applications | |
| CopperTen Cable Manager Bracket | TPNP-NNC10-WM-BKT |

| | | |
|------------------|------------|-------------|
| Replace XX with: | 01 = White | 06 = Blue |
| | 02 = Ivory | 07 = Green |
| | 03 = Gray | 08 = Yellow |
| | 04 = Black | 09 = Purple |
| | 05 = Red | 10 = Orange |

SPEC SHEET



RJ45 UTP Modular 568A/B Jack



Termination Puck

KRONE® is a registered trademark of ADC Telecommunications, Inc.



Web Site: www.adc.com

From North America, Call Toll Free: 1-800-366-3891 • Outside of North America: +1-952-938-8080
 Fax: +1-952-917-3237 • For a listing of ADC's global sales office locations, please refer to our web site.

ADC Telecommunications, Inc., P.O. Box 1101, Minneapolis, Minnesota USA 55440-1101
 Specifications published here are current as of the date of publication of this document. Because we are continuously improving our products, ADC reserves the right to change specifications without prior notice. At any time, you may verify product specifications by contacting our headquarters office in Minneapolis. ADC Telecommunications, Inc. views its patent portfolio as an important corporate asset and vigorously enforces its patents. Products or features contained herein may be covered by one or more U.S. or foreign patents. An Equal Opportunity Employer

101822AE 11/06 Revision © 2005 ADC Telecommunications, Inc. All Rights Reserved