

MAX® 6 MODULES

The MAX 6 module provides performance far exceeding category 6 connecting hardware performance specifications. It also insures backwards compatibility with components and systems of lower performing categories.

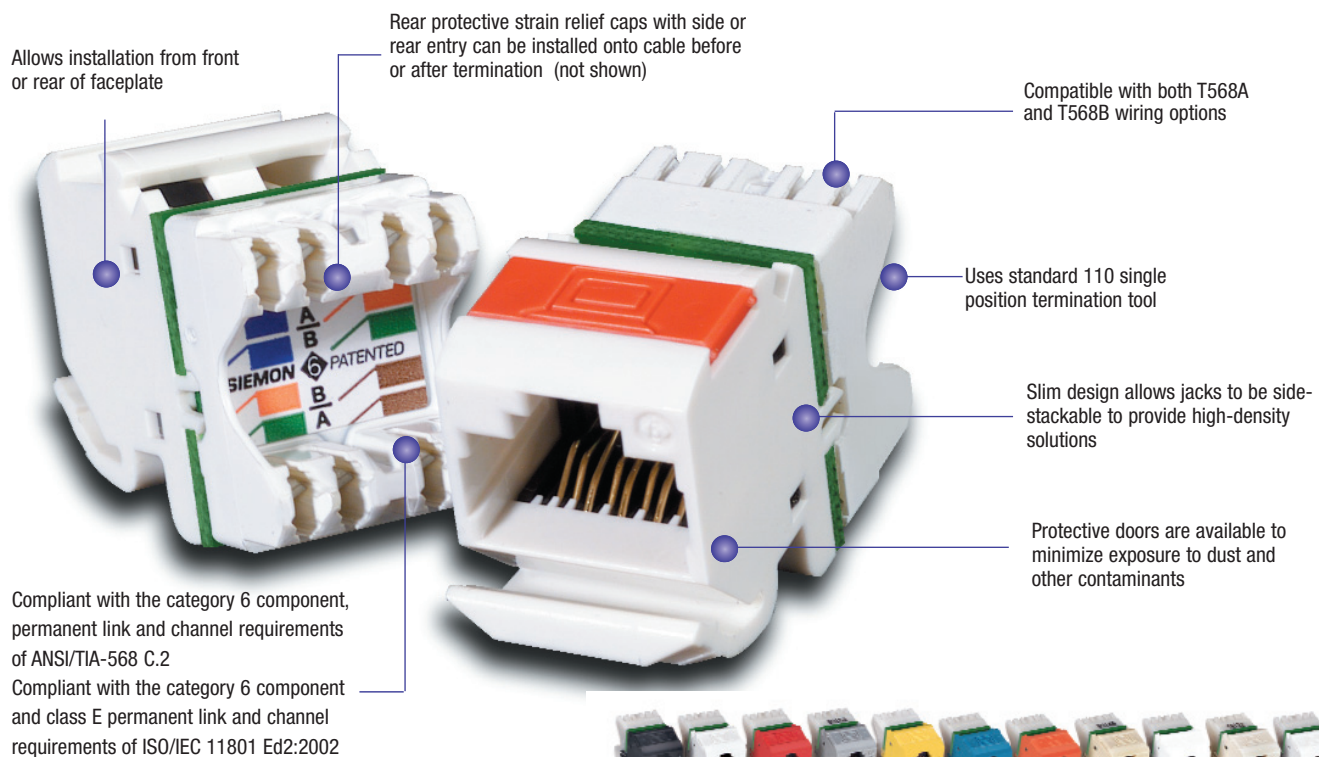
Installers and end users benefit from other rich features incorporated into the MAX 6 module. It's compact design is ideal for high density applications. Up to six modules can be utilized in a single gang faceplate and twelve modules in double gang faceplate. Also, the angled MAX 6 modules provide a gravity feed, low-profile design for the work area — greatly improving patch cord management in installations where clearance is at a minimum.

The flat MAX 6 modules are just as versatile — perfect for flush mount applications or with MAX series patch panels or surface mount (SM®) boxes. This solution makes it possible to configure a wide variety of mixed media solutions.

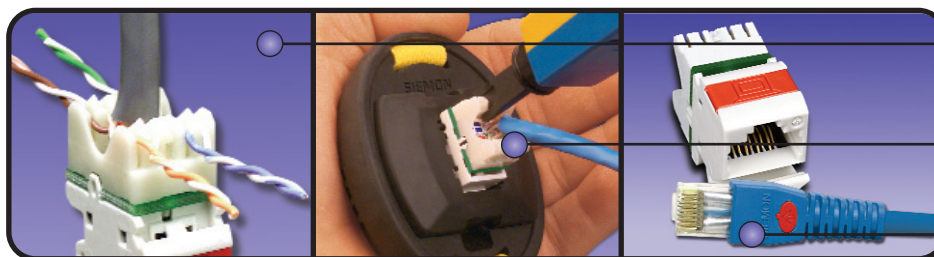


PATENTED

WORK AREA



MAX 6 modules are available in many colors, ideal for color-coding



Pyramid™ Wire Entry System on S310® blocks separates paired conductors when lacing cables to simplify and reduce installation time

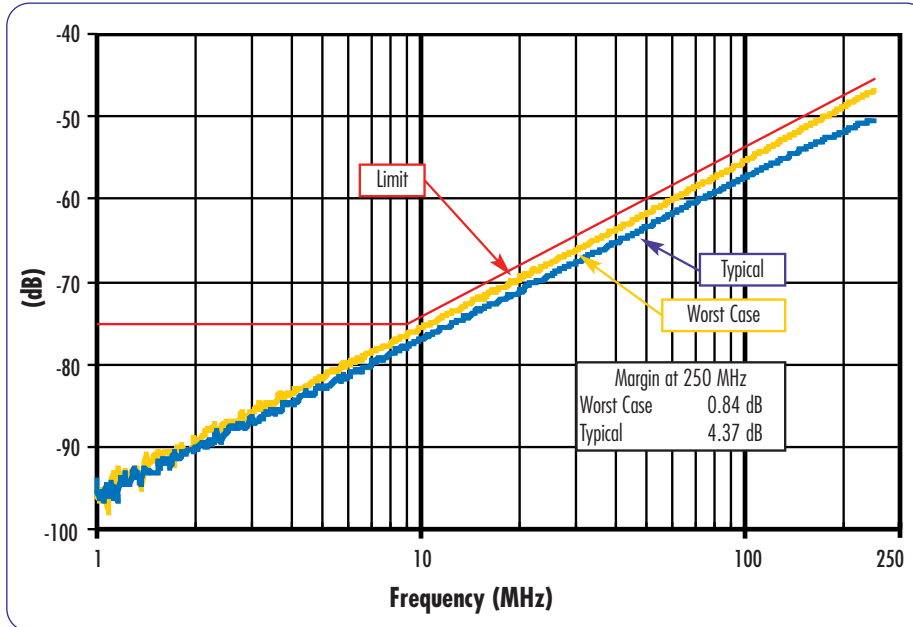
Siemon's Palm Guard with MAX 6 insert assists in securing module during termination

Use MC 6 modular cords to unlock the performance of Siemon MAX 6 modules

PRODUCT INFORMATION

Test Data:

Near-End Crosstalk Performance:



MAX® 6 Modules:

- MX6-(XX)Angled module with T568A/B wiring, rear strain relief cap and protective color-matching rubber door
MX6-F(XX).....Flat module with T568A/B wiring, rear strain relief cap
MX6-K(XX)Keystone module with T568A/B wiring and strain relief cap



MX6-(XX)



MX6-F(XX)



MX6-K(XX)

Use (XX) to specify color:

01 = black, 02 = white, 03 = red, 04 = gray, 05 = yellow, 06 = blue, 09 = orange, 20 = ivory, 25 = bright white, 80 = light ivory, 82 = alpine white

Add "-D" for optional color-matching door for flat version

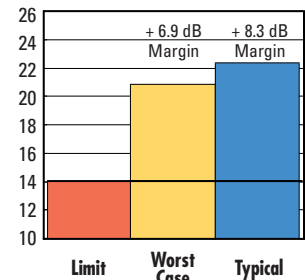
ⓑ Add "B" to end of part number for bulk project pack of 100 modules

Angled and flat modules include one color-matching, one red, and one blue icon
Door color is clear for angled red, yellow, blue and orange modules, white for flat
Note: Keystone version is designed for integration with various international mounting products and is not compatible with MAX mounting hardware

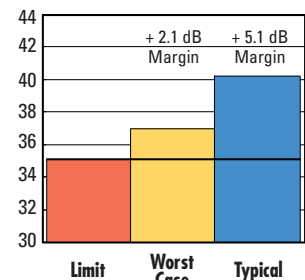
Because we continuously improve our products, Siemon reserves the right to change specifications and availability without prior notice.

HD®, MC®, MAX® and S310® are trademarks of Siemon

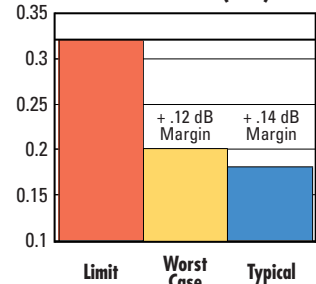
Return Loss at 250 MHz (dB)



FEXT Loss at 250 MHz (dB)



Attenuation at 250 MHz (dB)



For related product information request Spec Sheet(s):

MAX Series Modular Mounting Frames (PROD-SS-MMT)

MAX Series Modular Faceplates (PROD-SS-MXF)

MAX Series Patch Panels (PROD-SS-MXP)

Termination Tools (PROD-SS-S78)

North America

Watertown, CT USA
Phone (1) 860 945 4200 US
Phone (1) 888 425 6165 Canada

Europe/Middle East/Africa

Surrey, England
Phone (44) 0 1932 571771

Asia/Pacific

Shanghai, P.R. China
Phone (86) 21 5385 0303

Latin America

Bogota, Colombia
Phone (571) 657 1950