



**Middle Atlantic Products**

EXCEPTIONAL SUPPORT & PROTECTION™

# CableSafe™ Cabling Wall Mount Rack

96-01104 / rev. 1d / 06-03-10



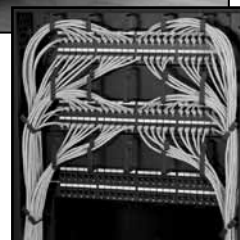
EIA/TIA Compliant



**Specifically designed for structured cabling, the CWR is a versatile system for mounting multiple patch panels and other voice/data equipment, where floor and wall space are at a premium**

## Features

- 26" width cabinet to allow for much needed space for patching. Comes standard with wide-face rackrail on left and right of cabinet.
- Four useable depths available: 15", 20", 24" and 30"
- Ships with front rackrail at 4" setback position to accommodate cable managers. Also accommodates rear rackrail for rear support and cable management.
- Swing open center section allows for easy front and rear access to equipment and cabling
- Includes an easily reversible left or right handswing locking / latching Plexi front door for added security and aesthetics. Solid and vented front doors also available.
- Engineered to facilitate passive thermal management- optional fan kit available when additional heat dissipation is required
- Ships fully assembled as left or right hand hinged to save installation time
- UL Listed in the US and Canada



CWR-xx-xx

## Architects and Engineers' Specifications

EIA compliant 19" cabling wall mount rack shall be Middle Atlantic Products model # CWR-\_\_\_-\_\_\_ (refer to chart). Overall dimensions shall be 26" W x \_\_\_" H x \_\_\_" D, with a useable depth of \_\_\_ (refer to chart). Weight capacity shall be 250 lbs. Center section and back pan shall be 16-gauge steel, phosphate pre-treated and finished in a black textured powder coat. Rackrail shall be constructed of 11-gauge steel with tapped 12-24 mounting holes in universal EIA spacing with black powder coat finish. Rack shall include \_\_\_ D-Rings for enhanced cable management (refer to chart). Rack shall have 1/2", 2" and 3" electrical knockouts on the top and bottom of the back pan. Rack shall be constructed to swing open for component cabling access, center section shall pivot for either left or right opening. Large opening on back pan shall have a 12-1/2" x 12-1/2" cutout for electrical pull-box. Top and bottom side vents will accommodate CWR-FKIT cooling kit. Rack shall be UL Listed in the US and Canada. CWR shall be GREENGUARD Indoor Air Quality Certified for Children and Schools. CWR shall be RoHS EU Directive 2002/95/EC compliant. CWR shall be manufactured by an ISO 9001 and ISO 14001 registered company. Rack shall be warrantied to be free from defects in materials or workmanship under normal use and conditions for the lifetime of the rack.

### OPTIONS

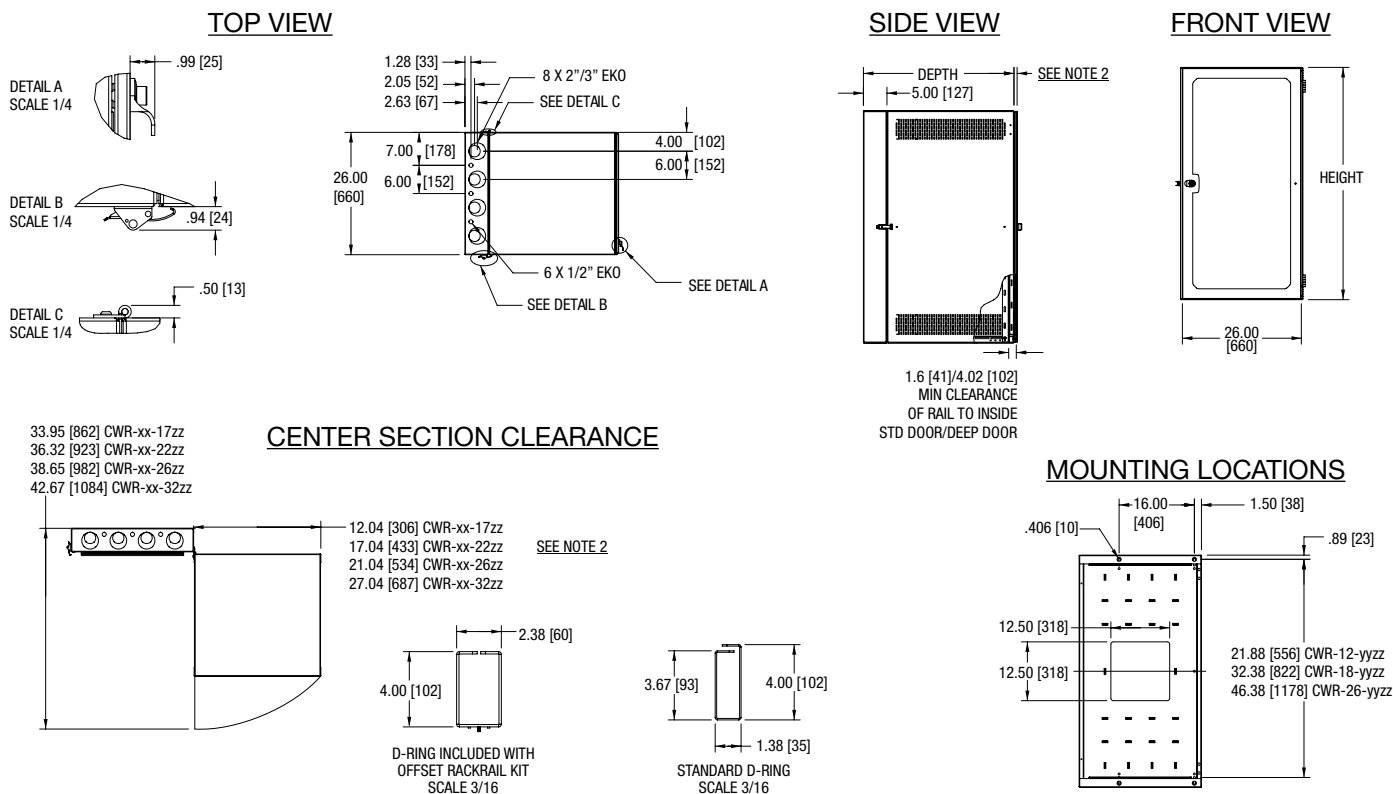
- Fan kit shall be CWR-FKIT and shall feature 2 fans and displace 95 CFM of free air.
- Rear rail kit, 11-gauge, 12-24 threaded, sold in pairs, hardware included, shall be model # CWR-RRXX (XX= # of rackspace).
- Off-set rail kit with D-Rings, 12-24 threaded, sold in pairs, hardware included, shall be model # CWR-OFRRXX (XX= # of rackspace).

**CUSTOMIZABLE SPECIFICATION CLIPS AVAILABLE AT MIDDLEATLANTIC.COM**

US: New Jersey • California • Illinois • Voice: 973-839-1011 Fax: 973-839-1976 • middleatlantic.com  
Canada: Ontario • British Columbia • Voice: 613-836-2501 Fax: 613-836-2690 • middleatlantic.ca

96-01104 / rev. 1d / 06-03-10 / Cabling Wall Mount Rack

# CableSafe™ Cabling Wall Mount Rack basic dimensions



Part #	Overall Height	Racking Height	Depth (w/o door)	Useable Depth	Useable Height	D-Ring Qty.
CWR-12-17XX	24.88 (632)	21.00 (533)	17.00 (432)	15.00 (381)	12 RU	4
CWR-12-21XX4	24.88 (632)	21.00 (533)	17.00 (432)	15.00 (381)	12 RU	4
CWR-12-22XX	24.88 (632)	21.00 (533)	22.00 (559)	20.00 (508)	12 RU	4
CWR-12-26XX4	24.88 (632)	21.00 (533)	22.00 (559)	20.00 (508)	12 RU	4
CWR-12-26XX	24.88 (632)	21.00 (533)	26.00 (660)	24.00 (610)	12 RU	4
CWR-12-30XX4	24.88 (632)	21.00 (533)	26.00 (660)	24.00 (610)	12 RU	4
CWR-12-32XX	24.88 (632)	21.00 (533)	32.00 (813)	30.00 (762)	12 RU	4
CWR-12-36XX4	24.88 (632)	21.00 (533)	32.00 (813)	30.00 (762)	12 RU	4
CWR-18-17XX	35.38 (899)	31.50 (800)	17.00 (432)	15.00 (381)	18 RU	6
CWR-18-21XX4	35.38 (899)	31.50 (800)	17.00 (432)	15.00 (381)	18 RU	6
CWR-18-22XX	35.38 (899)	31.50 (800)	22.00 (559)	20.00 (508)	18 RU	6
CWR-18-26XX4	35.38 (899)	31.50 (800)	22.00 (559)	20.00 (508)	18 RU	6
CWR-18-26XX	35.38 (899)	31.50 (800)	26.00 (660)	24.00 (610)	18 RU	6
CWR-18-30XX4	35.38 (899)	31.50 (800)	26.00 (660)	24.00 (610)	18 RU	6
CWR-18-32XX	35.38 (899)	31.50 (800)	32.00 (813)	30.00 (762)	18 RU	6
CWR-18-36XX4	35.38 (899)	31.50 (800)	32.00 (813)	30.00 (762)	18 RU	6
CWR-26-17XX	49.38 (1254)	45.50 (1156)	17.00 (432)	15.00 (381)	26 RU	8
CWR-26-21XX4	49.38 (1254)	45.50 (1156)	17.00 (432)	15.00 (381)	26 RU	8
CWR-26-22XX	49.38 (1254)	45.50 (1156)	22.00 (559)	20.00 (508)	26 RU	8
CWR-26-26XX4	49.38 (1254)	45.50 (1156)	22.00 (559)	20.00 (508)	26 RU	8
CWR-26-26XX	49.38 (1254)	45.50 (1156)	26.00 (660)	24.00 (610)	26 RU	8
CWR-26-30XX4	49.38 (1254)	45.50 (1156)	26.00 (660)	24.00 (610)	26 RU	8
CWR-26-32XX	49.38 (1254)	45.50 (1156)	32.00 (813)	30.00 (762)	26 RU	8
CWR-26-36XX4	49.38 (1254)	45.50 (1156)	32.00 (813)	30.00 (762)	26 RU	8

## Notes:

1. Replace 'XX' suffix with desired front door: PD- Plexi front door, SD- Solid front door, VD- Vented front door
2. Racks configured with standard front doors add .67" (17 mm) to overall depth. Racks configured with deep front doors ('XX4' suffix) add 4.06" (103mm) to overall depth.

