

Flextray Cutters



Patented

Part Number	Description	Qty./Box	Wt./Box	
			lbs.	kg
CLEANSHEAR	Cleanshear™ Cutting Tool	1	4.3	1.95

- Exclusive, patented Cleanshear cuts tray fast
- No sharp edges
- Designed specifically for cutting Flextray
- Safely cut and bend Flextray into any configuration



1 Face tray up. Slide cutter next to vertical wire and cut.



2 Turn tray to the side with open side facing you. Repeat step 1 to cut wire.



3 Finish cutting all side wires.



4 Turn tray open-side down and cut wires from bottom of tray.

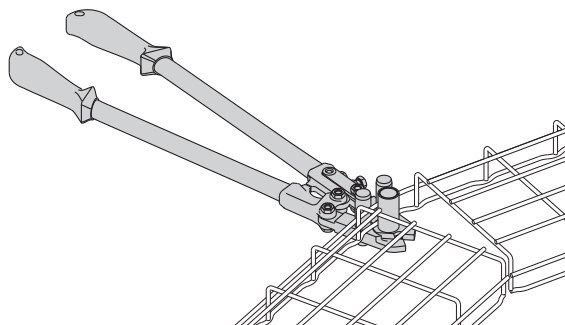


5 Finish cutting by moving to other side of tray to cut remaining wires,

Flextray Bender

Part Number	Description	Qty./Box	Wt./Box	
			lbs.	kg
CLEANSHEAR BEND	Cleanshear Cutting Tool With Bender Attachment	1	5.4	2.45

- Cleanshear™ Bender has our exclusive bending attachment
- Makes bending larger trays easy
- Recommended for bending tray widths of 16" (400mm) or greater

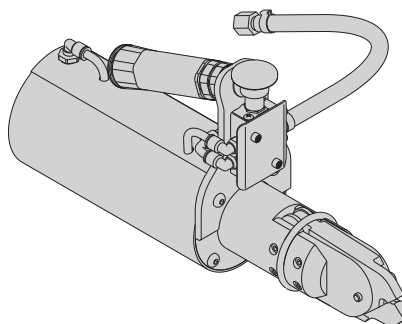


Patented

Airshear Cutter

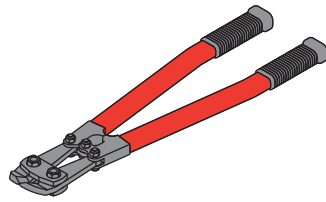
Part Number	Description	Qty./Box	Wt./Box	
			lbs.	kg
AIRSHEAR	Pneumatic Cleanshear Cutting Tool	1	9.0	4.08

- Fastest wire mesh cutter available
- 57% time savings over regular Cleanshear
- Airshear is available when you have a large project to install. Call us for details.

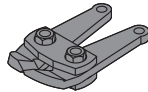


Patented

Angular Bolt Cutter



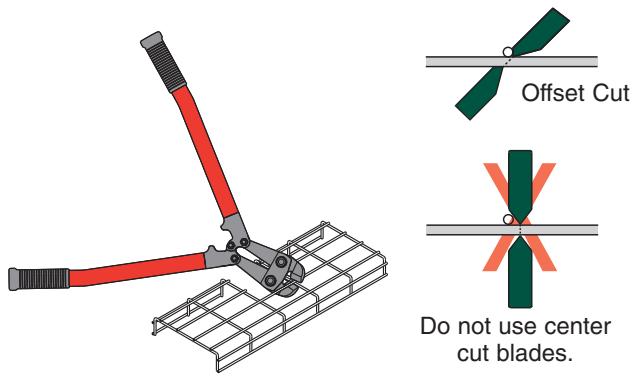
WB30BC
Angular Bolt Cutter



WB30RB
Replacement Blade

Part Number	Description	Qty./Box	Wt./Box	
			lbs.	kg
WB30BC	Bolt Cutter	1	6.8	3.1
WB30RB	Replacement Blade	1	1.3	0.6

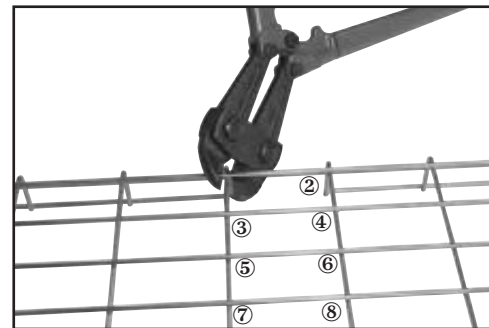
Completely adaptable, Cooper B-Line's Flextray is designed to accommodate jobsite changes. Cut wires with Cooper B-Line's Angular Bolt Cutter, bend to create a bend, tee, or reducer.



For the best results, use a WB30BC Angular Blade Offset Bolt Cutter with 24" (600 mm) long handles. The Offset Blade Cutter produces a clean cut. Position bolt cutter blades near the cross wire and perpendicular to wire to be cut (see illustration above). Proper cut will make the assembly faster, easier and safer while minimizing grinding.

Cut and remove each wire as illustrated below. Follow cutting pattern and blade positioning. Placing Flextray open side down provides the optimum cutting angle.

Cutting Order



Part Number	Length		Wt. Per Cutter		Box Quantity
	in.	mm	lbs.	kg	
WB50WC	12 ³ / ₄ "	325	3.0	1.3	1

Part Number	Description	Box Quantity
WB50RB	Replacement Blade	1
WB50BA	Replacement Battery	1

The Greenlee cable wire cutter makes flush cuts without burrs. Will cut .191" diameter wire in 2 seconds. Cutting head rotates 330° for ease of positioning and the tool automatically retracts when cut is complete. Comes with 2 batteries, charger, and carrying case. Approximately 250 cuts per charge.

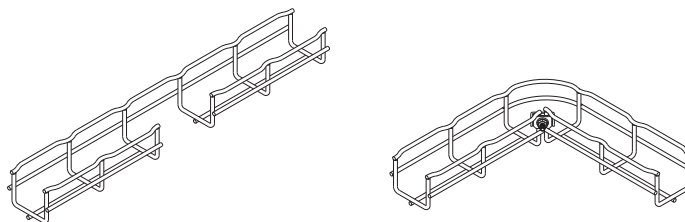
Flextray™ - Installation

90° Horizontal Bends (Short Radius)

- Make your own field cut horizontal bends using Clearshear™ to make safe, smooth cuts
- Can be made from any tray width and depth with any available finish
- SUPT WASHER & FTHDWE 1/4 hardware may be used on bottom of tray instead of WASHER SPL KIT where desired

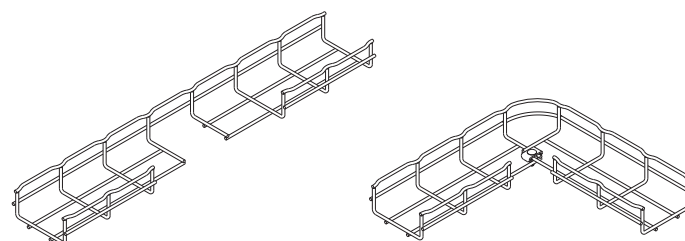
2" (50mm) Tray Width

Flextray Depth	Required Hardware Description	Quantity
2" (50mm)	WASHER SPL KIT	1



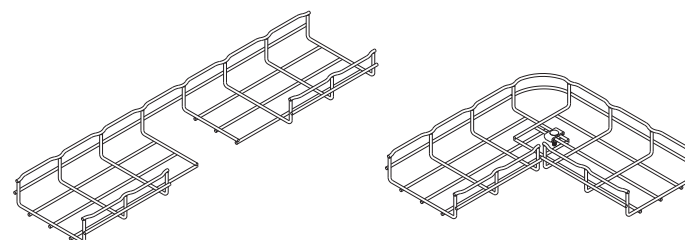
4" (100mm) Tray Width

Flextray Depth	Required Hardware Description	Quantity
1 1/2" (38mm)	WASHER SPL KIT	1
2" (50mm)	WASHER SPL KIT	1
4" (100mm)	WASHER SPL KIT	1



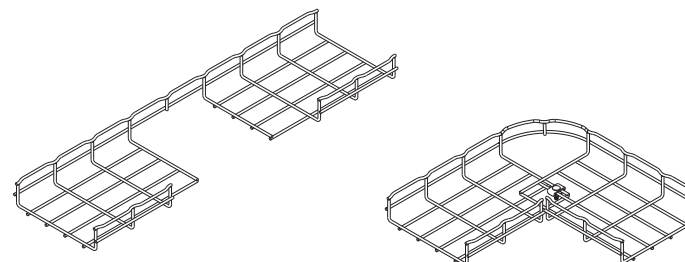
6" (150mm) Tray Width

Flextray Depth	Required Hardware Description	Quantity
1 1/2" (38mm)	WASHER SPL KIT	1
2" (50mm)	WASHER SPL KIT	1
4" (100mm)	WASHER SPL KIT	1



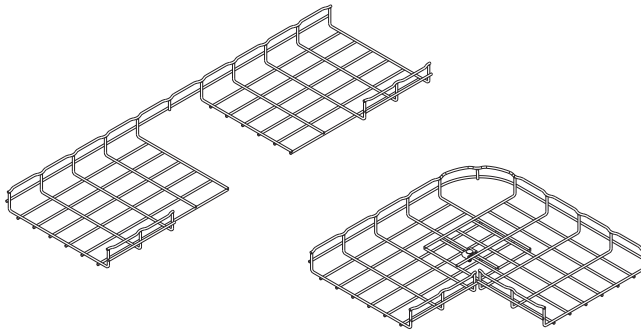
8" (200mm) Tray Width

Flextray Depth	Required Hardware Description	Quantity
1 1/2" (38mm)	WASHER SPL KIT	1
2" (50mm)	WASHER SPL KIT	1
4" (100mm)	WASHER SPL KIT	1
6" (150mm)	WASHER SPL KIT	1



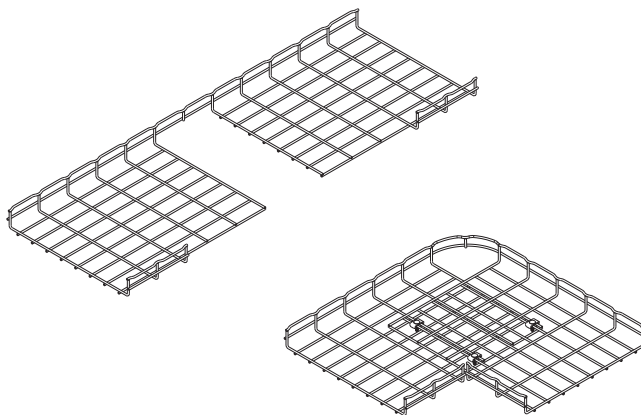
90° Horizontal Bends (Short Radius)

- Make your own field cut horizontal bends using Clearshear™ to make safe, smooth cuts
- Can be made from any tray width and depth with any available finish
- SUPT WASHER & FTHDWE 1/4 hardware may be used on bottom of tray instead of WASHER SPL KIT where desired



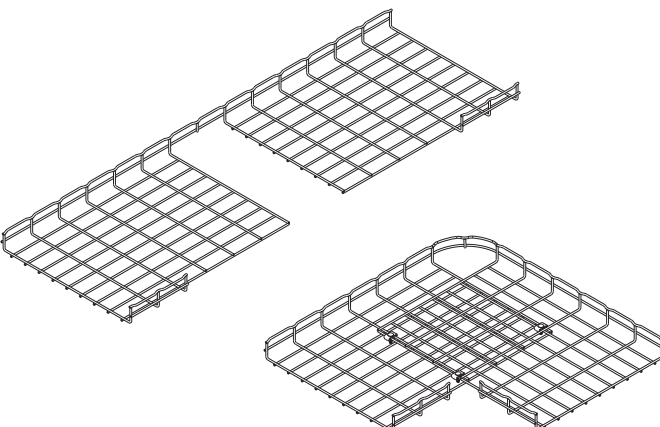
12" (300mm) Tray Width

Flextray Depth	Required Hardware Description	Quantity
1 1/2" (38mm)	WASHER SPL KIT	1
2" (50mm)	WASHER SPL KIT	1
4" (100mm)	WASHER SPL KIT	1
6" (150mm)	WASHER SPL KIT	1



16" (400mm) Tray Width

Flextray Depth	Required Hardware Description	Quantity
2" (50mm)	WASHER SPL KIT	3
4" (100mm)	WASHER SPL KIT	3
6" (150mm)	WASHER SPL KIT	3



18" (450mm) Tray Width

Flextray Depth	Required Hardware Description	Quantity
2" (50mm)	WASHER SPL KIT	3
4" (100mm)	WASHER SPL KIT	3
6" (150mm)	WASHER SPL KIT	3

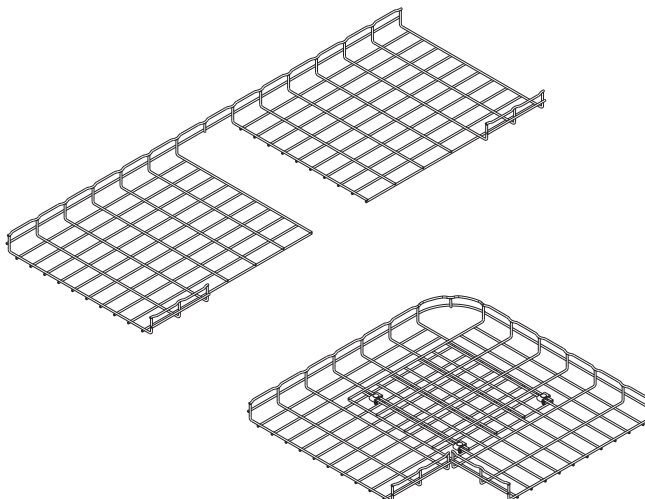
Flextray™ - Installation

90° Horizontal Bends (Short Radius)

- Make your own field cut horizontal bends using Clearshear™ to make safe, smooth cuts
- Can be made from any tray width and depth with any available finish
- SUPT WASHER & FTHDWE 1/4 hardware may be used on bottom of tray instead of WASHER SPL KIT where desired

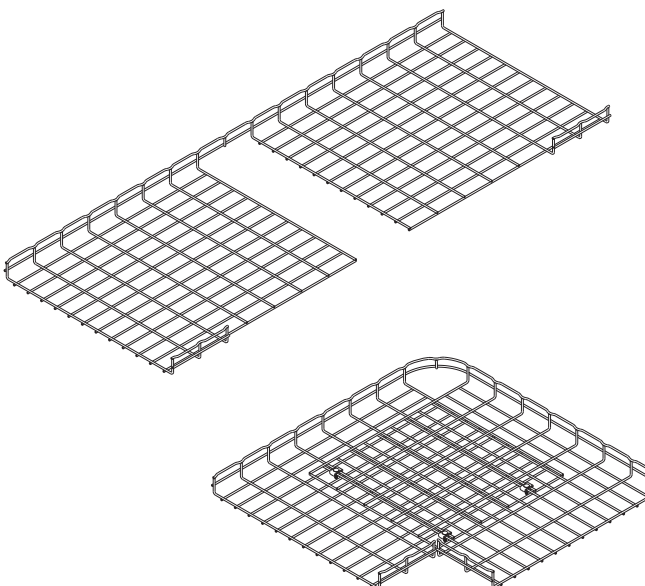
20" (500mm) Tray Width

Flextray Depth	Required Hardware Description	Quantity
2" (50mm)	WASHER SPL KIT	3
4" (100mm)	WASHER SPL KIT	3
6" (150mm)	WASHER SPL KIT	3



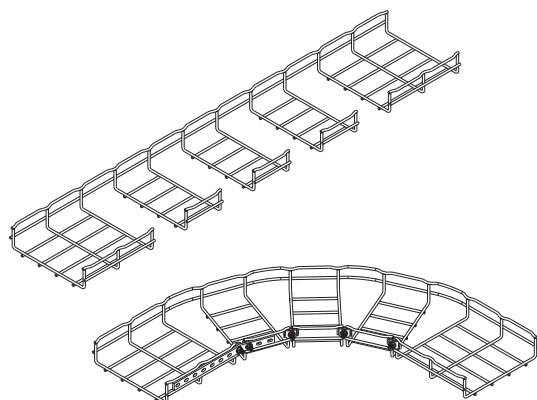
24" (600mm) Tray Width

Flextray Depth	Required Hardware Description	Quantity
2" (50mm)	WASHER SPL KIT	3
4" (100mm)	WASHER SPL KIT	3
6" (150mm)	WASHER SPL KIT	3



90° Horizontal Bends (Long Radius)

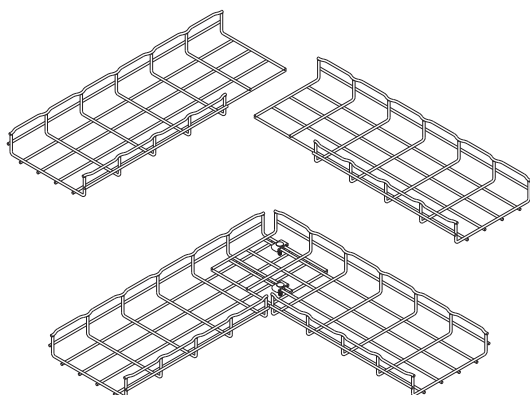
- Make your own field cut horizontal sweeps using Clearshear™ to make safe, smooth cuts
- Can be made from any tray width and depth with any available finish
- Cut as many Segments as required to control sweep radius (use chart for recommendations)
- One (1) WASHER SPL KIT is required to connect each cut segment minus one, this segment uses one (1) SPLICE BAR, two (2) FTHDWE 1/4 and two (2) BTM WASHER
- Illustration shown below is for a 8" (200mm) width
- 1.5" deep Flextray has only one (1) side wire
- 2" deep Flextray has two (2) side wires - shown
- 4" deep Flextray has three (3) side wires
- 6" deep Flextray has four (4) side wires



Flextray Width	Segments To Be Removed	Component Qty.		
		WASHER SPL KIT	FTHDWE 1/4 & BTM WASHER	SPLICE BAR
4" (100mm)	2	1	2	1
6" (150mm)	3	2	2	1
8" (200mm)	4	3	2	1
12" (300mm)	6	5	2	1
16" (400mm)	7	6	2	1
18" (450mm)	8	7	2	1
20" (500mm)	10	9	2	1
24" (600mm)	11	10	2	1
30" (750mm)	13	12	2	1
32" (800mm)	13	12	2	1

90° Horizontal Bend From (2) Straight Sections

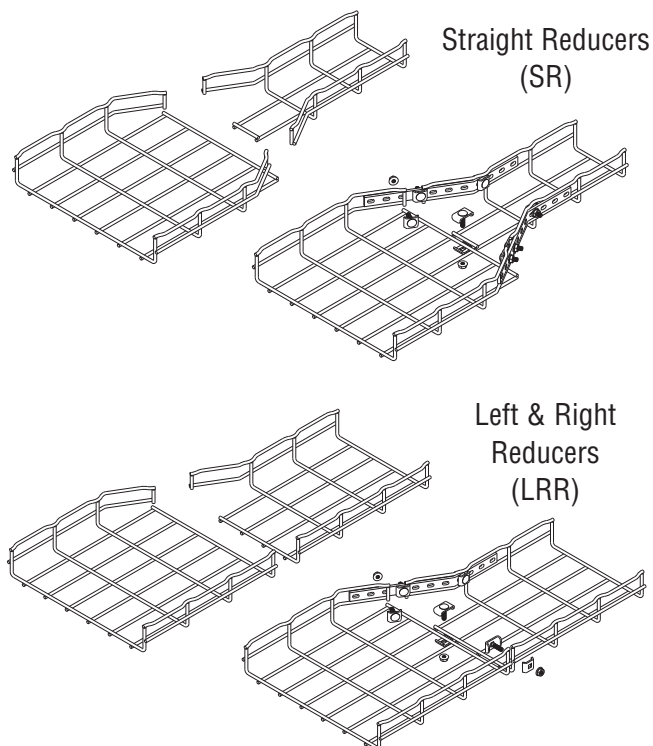
- Cut required number of wire side sections listed in chart per the illustration below (Illustration is for a 8" (200mm) width)
- 1.5" deep Flextray has only one (1) side wire
- 2" deep Flextray has two (2) side wires - shown
- 4" deep Flextray has three (3) side wires
- 6" deep Flextray has four (4) side wires



Flextray Width	Side Sections To Be Removed	WASHER SPL KIT Qty.
4" (100mm)	1	2
6" (150mm)	2	2
8" (200mm)	2	2
12" (300mm)	3	2
16" (400mm)	4	3
18" (450mm)	5	3
20" (500mm)	5	3
24" (600mm)	6	4
30" (750mm)	8	4
32" (800mm)	8	4

Reducers

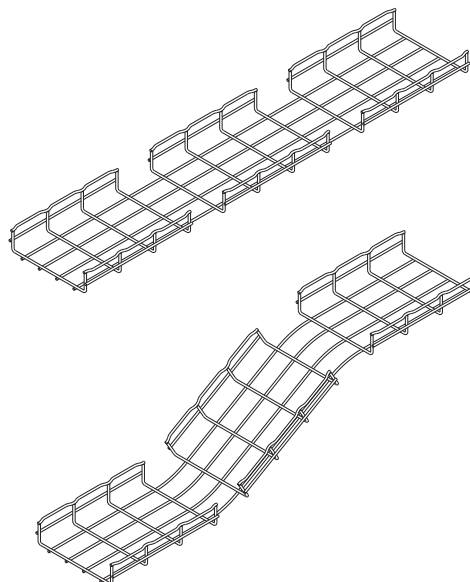
Large Flextray Width	WASHER SPL KIT		Component Qty. FTHDWE 1/4 & BTM WASHER		SPLICE BAR	
	(SR)	(LRR)	(SR)	(LRR)	(SR)	(LRR)
4" (100mm)	-	1	-	2	-	1
6" (150mm)	-	2	-	2	-	1
8" (200mm)	1	2	4	2	2	1
12" (300mm)	2	3	4	2	2	1
16" (400mm)	2	3	4	2	2	1
18" (450mm)	2	3	4	2	2	1
20" (500mm)	3	3	4	2	2	1
24" (600mm)	3	3	4	2	2	1
30" (750mm)	3	3	4	2	2	1
32" (800mm)	3	3	4	2	2	1



- 1.5" deep Flextray has only one (1) side wire
- 2" deep Flextray has two (2) side wires - shown
- 4" deep Flextray has three (3) side wires
- 6" deep Flextray has four (4) side wires

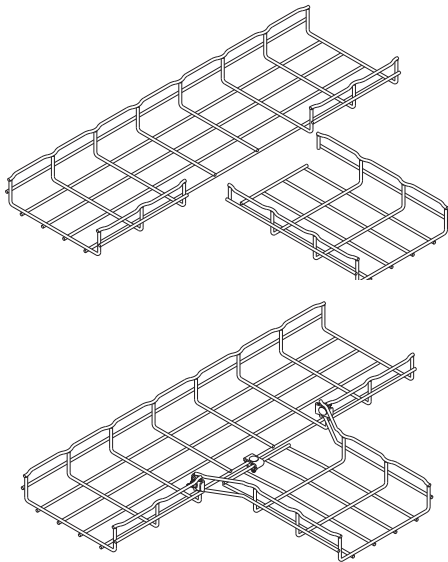
Vertical Inside & Outside Bends

- Cut wire section as shown and bend to desired angle
- 1.5" deep Flextray has only one (1) side wire
- 2" deep Flextray has two (2) side wires - shown
- 4" deep Flextray has three (3) side wires
- 6" deep Flextray has four (4) side wires



Horizontal Tees (and crosses)

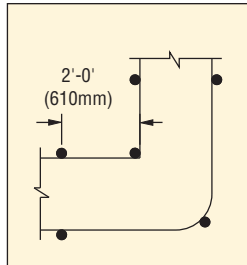
- Cut wire side sections as shown in the illustration below (Illustration is for a 8" (200mm) width)
- 1.5" deep Flextray has only one (1) side wire
- 2" deep Flextray has two (2) side wires - shown
- 4" deep Flextray has three (3) side wires
- 6" deep Flextray has four (4) side wires
- For crosses, duplicate process on opposite side



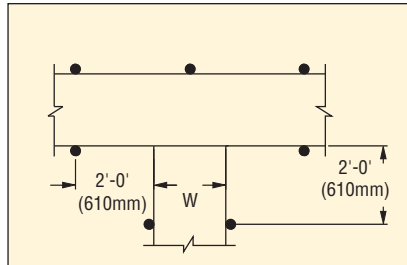
Flextray Width	WASHER SPL KIT Qty.
2" (50mm)	2
4" (100mm)	2
6" (150mm)	3
8" (200mm)	3
12" (300mm)	4
16" (400mm)	4
18" (450mm)	4
20" (500mm)	4
24" (600mm)	4
30" (750mm)	5
32" (800mm)	5

Recommended Support Locations For Fabricated Tray Fittings

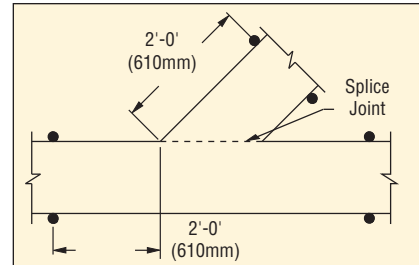
The following are recommended support diagrams to serve as guidelines for installing wire basket cable support systems in the field. The information is intended to provide the installer some practical assistance when estimating the amounts of supports and to help in identifying support locations for various field conditions for the installer. It does not, however, cover every situation that may arise when installing the product. It may be possible to install narrow trays with lighter loads and fewer supports. Wider trays with heavier loading, trays with long radii, or those with multiple side wires cut may require additional support to avoid unwanted deflection.



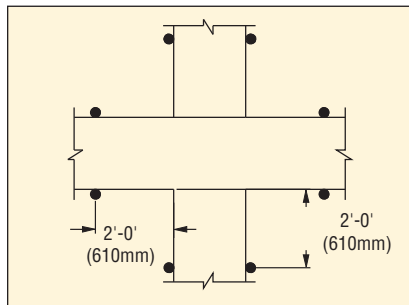
Horizontal Elbow Support
Inside corner supports are not required on 90° short radius bends.



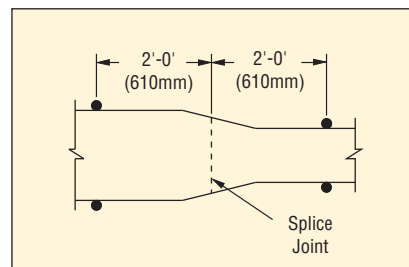
Horizontal Tee Support
On 24" wide items, one support may be placed at the mid-point of the back span as illustrated.



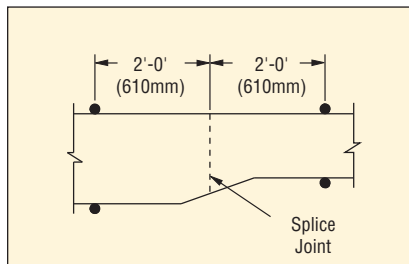
Horizontal Wye Support
On 24" wide items, recommended distance is 1 ft. 6 in. (457mm) from splice connection.



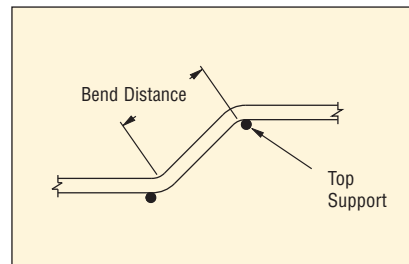
Horizontal Cross Support
On 24" wide items, recommended distance is 1 ft. 6 in. (457mm) from splice connection.



Straight Reducer Support
Place reducer supports within 2 ft. (610mm) of each splice connection.



Left/Right Reducer Support
Place reducer supports within 2 ft. (610mm) of each splice connection.



Vertical Elbows
Support vertical elbows at top support location. Bend distances of 4 ft. (1219mm) and over should be supported at each end as illustrated.