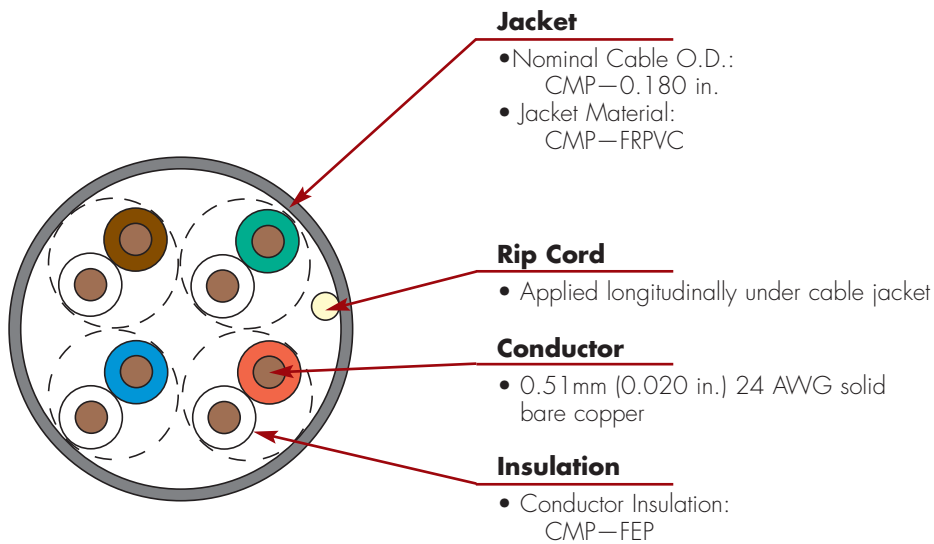
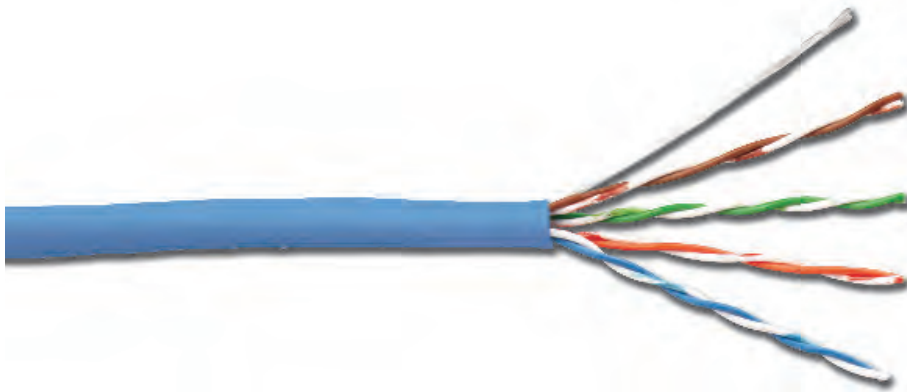


Solution 5e™ UTP Cable — US

Siemon Solution 5e UTP cable perfectly complements the performance of our category 5e outlets. Siemon cable meets or exceeds all ANSI/TIA and ISO/IEC requirements for category 5e transmission performance.



CONSTRUCTION

- Reverse sequential numbering
- Round jacket
- Jacket material is lead free

PACKAGING

- 1000 ft. reelex
- Weight
CMP— 21 lbs/1000 ft.

STANDARDS COMPLIANCE

- IEC 61156-5
- ISO/IEC 11801 Ed 2.2
- ANSI/TIA-568-C.2
- RoHS Compliant
- EN 55024
- EN 50173

ETHERNET APPLICATIONS SUPPORT

- 1000BASE-T
- 100BASE-T
- 10BASE-T

Supports any application designed for category 5e or lower cabling

PRODUCT INFORMATION

Solution 5e UTP Cable

ELECTRICAL SPECIFICATIONS

DC Resistance	<9.38 Ω/100m
DC Resistance Unbalance	5%
Mutual Capacitance	5.6 nF/100m
Capacitance Unbalance	<330 pF/100m
Characteristic Impedance (ohms)	1 - 100 MHz: 100 ± 15% 100 - 350 MHz: 100 ± 22%
NVP	CMP—70%
Delay Skew	≤ 45ns

PHYSICAL PROPERTIES

Pulling Tension (max)	110N (25 lbf)
Bend Radius (min)	4 x O.D.; 19mm (0.75)
Installation Temperature	0 to 60°C (+32 to 140°F)
Storage Temperature	-20 to 75°C (-4 to 167°F)
Operating Temperature	-20 to 60°C (-4 to 140°F)

TRANSMISSION PERFORMANCE

Guaranteed Worst Case:
Based on category 5e requirements from ANSI/TIA-568-C.2

Siemon Typical:
Based on worst case test data from a randomly selected cable sample

Frequency (MHz)	Insertion Loss (dB/100m)		NEXT (dB)		PS NEXT (dB)		ACR-N (dB)		PS ACR-N (dB)		ACR-F (dB)		PS ACR-F (dB)		Return Loss (dB)		Propagation Delay (ns)	
	Guaranteed Worst Case	Siemon Typical	Guaranteed Worst Case	Siemon Typical	Guaranteed Worst Case	Siemon Typical	Guaranteed Worst Case	Siemon Typical	Guaranteed Worst Case	Siemon Typical	Guaranteed Worst Case	Siemon Typical	Guaranteed Worst Case	Siemon Typical	Guaranteed Worst Case	Siemon Typical	Guaranteed Worst Case	Siemon Typical
1.0	2.0	2.0	65.3	79.8	62.3	78.2	63.3	77.8	60.3	76.2	63.8	69.4	60.8	69.0	20.0	27.4	570	545
4.0	4.1	3.9	56.3	78.0	53.3	74.5	52.2	74.1	49.2	70.5	51.8	57.8	48.8	57.5	23.0	32.9	552	527
10.0	6.5	6.2	50.3	68.7	47.3	65.4	43.8	62.4	40.8	59.2	43.8	50.1	40.8	49.7	25.0	31.6	545	250
16.0	8.2	7.9	47.2	64.5	44.2	62.9	39.0	56.5	36.0	55.0	39.7	46.0	36.7	45.4	25.0	31.7	543	518
20.0	9.3	8.9	45.8	63.3	42.8	60.9	36.5	54.4	33.5	52.0	37.8	44.1	34.8	43.4	25.0	32.2	542	517
31.25	11.7	11.2	42.9	59.4	39.9	57.5	31.2	48.2	28.2	46.4	33.9	40.4	30.9	39.5	23.6	33.3	540	515
62.5	17.0	16.0	38.4	50.6	35.4	49.4	21.4	34.6	18.4	33.4	27.9	34.6	24.9	33.7	21.5	28.1	539	514
100.0	22.0	20.5	35.3	48.0	32.3	46.8	13.3	27.5	10.3	26.3	23.8	31.8	20.8	31.3	20.1	25.0	538	513
160.0*	-	26.4	-	48.5	-	46.6	-	22.1	-	20.2	-	30.0	-	29.5	-	22.3	-	512
200.0*	-	29.6	-	42.9	-	41.8	-	13.3	-	12.2	-	29.6	-	29.2	-	19.8	-	512
250.0*	-	33.4	-	44.8	-	43.1	-	11.4	-	9.7	-	31.2	-	30.9	-	20.8	-	511
300.0*	-	36.9	-	38.9	-	38.7	-	2.0	-	1.8	-	33.7	-	31.1	-	18.5	-	511
350.0*	-	40.2	-	41.8	-	40.7	-	1.6	-	0.5	-	34.7	-	31.3	-	20.2	-	511

*Performance for frequencies above 100MHz are for information only.
Transmission performance based on 100 meters (328 ft)

Solution 5e Plenum 4-Pair UTP Cable (CMP, CSA Type FT6):

9C5P4-E1-(XX)-RXA.....Plenum, 1000 ft. Reelex

Use (XX) to specify jacket color: **02 = white**, 03 = red, 04 = gray, 05 = yellow, **06 = blue**, 07 = green, 08 = violet, 09 = orange

Cable colors highlighted in red and 1000 ft. package indicate standard products which are readily available.
Other colors may have extended lead times and minimum purchase requirements.

Because we continuously improve our products, Siemon reserves the right to change specifications and availability without prior notice.

Solution 5e™, MAX®, MC®, HD® and S110® are trademarks of Siemon

North America
Watertown, CT USA
Phone (1) 860 945 4200 US
Phone (1) 888 425 6165 Canada

Europe/Middle East/Africa
Surrey, England
Phone (44) 0 1932 571771

Asia/Pacific
Shanghai, P.R. China
Phone (86) 21 5385 0303

Latin America
Bogota, Colombia
Phone (571) 657 1950