

# MapIT G2 Smart Copper Patch Panel

The MapIT G2 Smart Copper Patch Panels (SPP) are an industry first in intelligent infrastructure management. The panel features on board intelligence and a combination of LEDs and a backlit LCD to guide technicians. The LCD can be used to display patch cord trace and connectivity circuit information. It can also be used to troubleshoot network issues, which can drastically reduce downtime and increase productivity. Also, since it is actively connected to your database, the LCD could be used as a virtual label, dynamically displaying panel and port information directly from the MapIT software.



Smart — on panel intelligence tracks patch cord connections and drives LCD/LEDs for tech guidance

High Density — 24 ports in a compact design

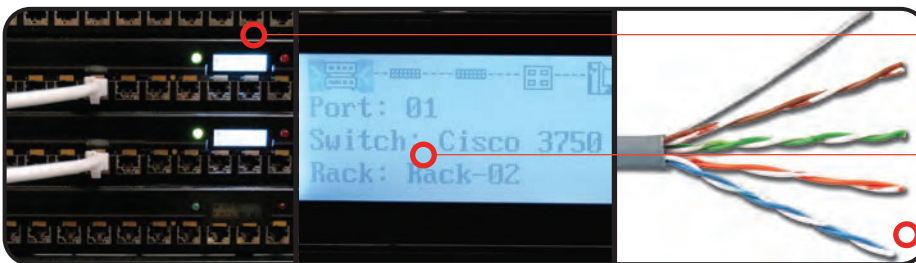
Green — MapIT G2 uses 78% less power than competing systems



Robust — Single piece construction integrates outlet retention and cable management. Panel includes Quick-Ground technology for shielded systems.

Reliable — Panels have been tested to 20-years MTBF. All active components are field serviceable

Simple — Control connections to the MCP or DCP are made on the back of the patch panel with 5e solid shielded cable.



Trace patch cord connections

With a touch of the probe pen a complete end-to-end circuit trace is shown on-screen at the MCP or DCP.

Custom system cables are a thing of the past. Now, category 5e solid shielded cable can be terminated in the field for all Control connections.

# Product Information

## Features and Benefits

Item	Feature	Benefit
<b>Smart Features</b>	Backlit graphic LCD and green/red LEDs for patch cord traces, diagnostics and tech guidance	Improves technician efficiency, allows multiple techs to work in the same patch zone without confusion
<b>Resilient</b>	Redundant power and communications to patch panels	Increases system reliability
<b>Physical Layer Monitor</b>	Monitors patch cord connections	Identify unauthorized disconnections, protects critical applications, ensures accurate documentation
<b>On Panel Intelligence</b>	Port monitoring capability is built into each patch panel	Increases density and reduces cost
<b>Heat</b>	SPP runs cold and does not impede cooling airflow in cabinets	Helps maximize cooling efficiency in data center environments
<b>Connections</b>	Control Cable connections can be made using cat 5e solid shielded cable	Readily available, low cost, field configurable
<b>Self Diagnostics</b>	If an SPP is disconnected from the system, the MCP will report it to the MapIT software, which can trigger an alert to an IT manager or technician to fix the problem	Makes maintenance of the MapIT G2 system simple, reduces downtime
<b>Scalable</b>	Remote offices can use as few as two SPPs. For data centers, thousands of panels may be used to monitor very large patch zones	Cost effective solution for monitoring small remote offices, large data centers or office/campus environments
<b>Installation</b>	Easy to understand and configure. No need to manually map or test each port	Reduces the time required to configure and install the system
<b>Reliable</b>	Tested to MTBF of 20 years	Ensures product reliability and life

# Product Information

## Specifications

<b>Weight and Dimensions</b>	Height	44.45mm (1.75 in.)
	Width	482.6mm (19 in.)
	Depth	101.6mm (4 in.)
	Weight	2.27kg (5 lbs)
<b>Outlet Compatibility</b>	Panel type	Modular
	Number of Ports	24 (sold separately)
	Outlet Type	Keystone
	Compatible Outlets	Siemon keystone Z-MAX™ Shielded and unshielded outlets Siemon Keystone MAX™ unshielded outlets
<b>LCD Display</b>	Size	128 x 32 pixels
	Type	Graphic
	Backlight	White LED
	Timeout	User programmable 3 to 30 seconds
<b>Control Connections</b>	Connection Type	S110 (flat panel) RJ45 (angled panel)
	Ports	1 IN, 1 OUT
	Protocol	RS485
	Control Cable Type	Category 5e solid, shielded
<b>Environmental</b>	Operating Temperature	0° to 45° C (32° to 113° F)
	Operating Humidity	Up to 90%, non-condensing
	Storage Temperature	-40° to 70° C (40° to 158° F)
	Storage Humidity	Up to 90%, non-condensing
<b>EMC</b>	FCC Part 15 (47 CFR 15) Class A, ICES-003 Class A, EN55022/CISPR 22 Class A, AS/NZS 3548 Class A, CCC.	
<b>EMC Immunity</b>	EN/IEC 61000 - 4-2 EN/IEC 61000 - 4-3 EN/IEC 61000 - 4-4 EN/IEC 61000 - 4-5	EN/IEC 61000 - 4-6 EN/IEC 61000 - 4-11
<b>Safety</b>	UL 60950-1-1st Ed (2003) - Information Technology Equipment - Safety Part 1: General Requirements ACA TS 001, AS/NZS 3260	

# Ordering Information

## MapIT® G2 Smart Patch Panel

M-SPP(X)-K24ENS.....MapIT G2 24-port modular Smart Patch Panel, accepts Siemon shielded and unshielded Z-MAX™ Keystone outlets or unshielded MAX keystone outlets (sold separately)  
Includes mounting hardware, labels, (24) cable ties and panel ground lug

Use (X) to specify panel type: Blank = Flat, A = Angled



## MapIT® G2-Ready Patch Panel

M-SPP(X)-K24E-001.....MapIT G2-Ready 24-port modular Patch Panel, accepts Siemon shielded and unshielded Z-MAX Keystone outlets or unshielded MAX keystone outlets (sold separately)  
Includes mounting hardware, labels, (24) cable ties and panel ground lug

M-SPP(X)-PCBA-24.....MapIT G2 Upgrade Kit for MapIT G2 Ready Patch Panels. (Upgrade kit includes PCB with built-in sensor pads, LED's and LCD display, new front panel cover, additional mounting hardware & components with instructions), software sold separately

Use (X) to specify panel type: Blank = Flat, A = Angled

## Accessories

### Siemon Keystone Outlets

Z6A-SK(XX).....Keystone shielded Z-MAX™ 6A outlet, T568A/B  
Z6A-K(XX).....Keystone unshielded Z-MAX 6A outlet, T568A/B  
Z6-K(XX).....Keystone unshielded Z-MAX 6 outlet, T568A/B  
MX6-K01.....Category 6 keystone UTP MAX module, black rear strain relief cap

Use (XX) to specify color:

01 = black, 02 = white, 03 = red, 04 = gray, 05 = yellow, 06 = blue, 07 = green,  
09 = orange, 20 = ivory, 25 = bright white, 80 = light ivory



Shielded  
Keystone  
Z-MAX



Unshielded  
Keystone  
Z-MAX

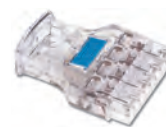
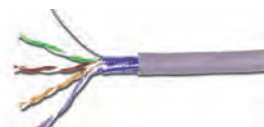
### MapIT G2 Patch Cords

M-10GMCS-(XX)M(XX)L.....Category 6A shielded, double-ended, stranded modular cord,  
color-matching boot, T568A/B, LSOH, meter length

M-10GMC-(XX)-(XX).....Category 6A unshielded, double-ended, stranded modular cord,  
color-matching boot, T568A/B, LSOH, foot length

M-MC6-(XX)-(XX).....Category 6 unshielded, double-ended, stranded modular cord,  
color-matching boot, T568A/B, CMG, foot length

Use 1st (XX) to specify length, use 2nd (XX) to specify color: 02 = White, 04 = Gray, 06 = Blue



### Category 5e Shielded Cable for Bus Connections

9A5R4-E1-(XX)-RIA.....Riser (CMR, CSA FT4) 305m (1000 ft.) Reel (US)  
9A5R4-E2.....Riser (CMR, CSA FT4, Riser) Blue jacket, 305m (1000 ft.) Reel-in-Box

### 110 Patch Plugs

S110P4.....4-pair, field-terminated S110 patch plug (colored icons not included)

Because we continuously improve our products, Siemon reserves the right to change specifications and availability without prior notice.

S110®, MapIT® and Z-MAX™ are trademarks of Siemon

#### North America

Watertown, CT USA  
Phone (1) 860 945 4200 US  
Phone (1) 888 425 6165 Canada

#### Europe/Middle East/Africa

Surrey, England  
Phone (44) 0 1932 571771

#### Asia/Pacific

Shanghai, P.R. China  
Phone (86) 21 5385 0303

#### Latin America

Bogota, Colombia  
Phone (571) 657 1950