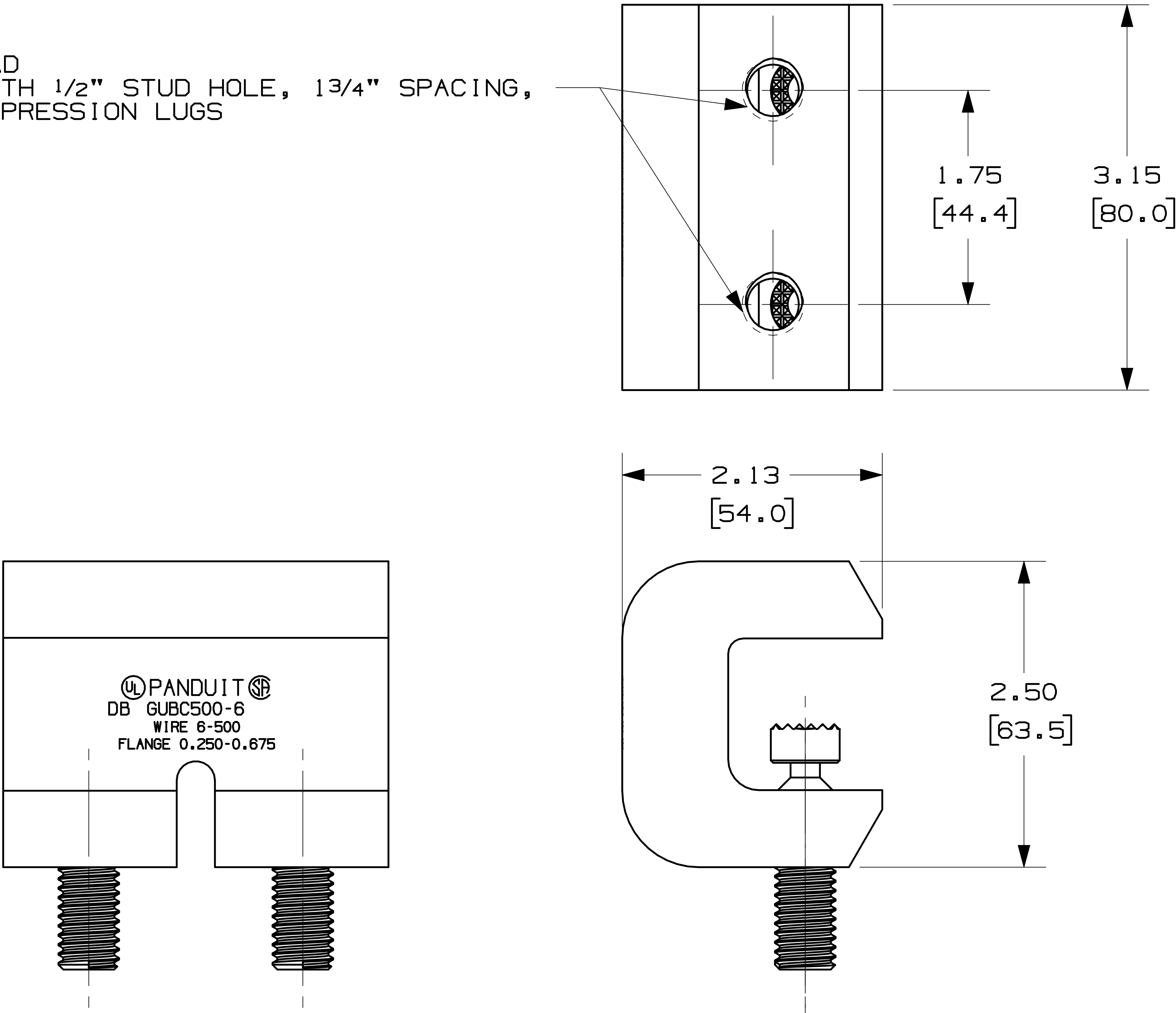


1/2-13 THREAD
-FOR USE WITH 1/2" STUD HOLE, 13/4" SPACING,
2 HOLE COMPRESSION LUGS



- NOTES:
1. DIMENSIONS IN PARENTHESIS ARE MILLIMETERS.
 2. FITS WIDE RANGE OF STANDARD (ANGLED) AND WIDE FLANGE (PARALLEL) STRUCTURAL STEEL BEAMS.
 3. PROVIDES MOUNTING PAD SUITABLE FOR 2 HOLE COMPRESSION LUG.
 4. UL 467 LISTED AND CSA 22.2 CERTIFIED FOR GROUNDING AND BONDING SUITABLE FOR DIRECT BURIAL IN EARTH OR CONCRETE.
 5. PRE-APPLIED ANTIOXIDANT COMPOUND ENSURES A HIGH QUALITY MECHANICAL AND ELECTRICAL BOND, SPEEDING INSTALLATION.
 6. HARDWARE KIT (GLMHK) SOLD SEPERATLEY FOR MOUNTING COMPRESSION LUG TO BEAM CLAMP.
 7. MEETS IEEE STD 837-2002.

PANDUIT PART NUMBER	COPPER CONDUCTOR SIZE RANGE AWG - [MM]	FLANGE THICKNESS IN [MM]	THREAD SIZE FOR LUG ATTACHMENT	HEX SIZE	STD. PKG QTY
GUBC500-6	#6 AWG - 500 KCMIL (16-240 SQ MM)	.250-.675 [6.3-17.1]	1/2-13	1/4	1

							CAD FILENAME/LAYERS N10725AE_DS_GUBC500-6_00A		
							PANDUIT CORP TINLEY PARK, ILLINOIS UNIVERSAL BEAM GROUNDING CLAMP (GUBC500-6) CUSTOMER DRAWING		
							UNLESS OTHERWISE SPECIFIED, DIMENSIONAL TOLERANCES ARE: (.X) ± .03 (.XX) ± .03		UNLESS OTHERWISE SPECIFIED, ALL DIMENSIONS ARE GIVEN IN INCHES, THIRD ANGLE PROJECTION
							DRAWN BY JHNU	MAT'L: HIGH CONDUCTIVITY COPPER	SCALE NONE
OO	4/08	JHNU	RGB	DRAWING RELEASED			DATE 4/08		DRAWING NO. C41751
REV	DATE	BY	CHK	DESCRIPTION		ECN	CUST		DWG B SIZE