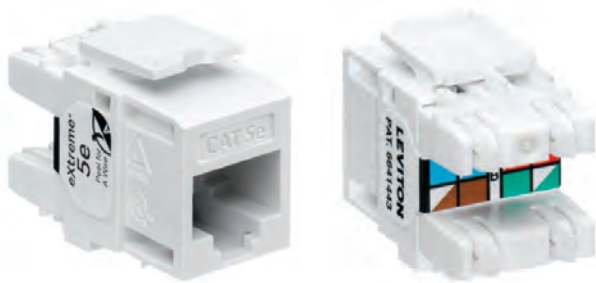


## eXtreme® Cat 5e Component-Rated UTP QuickPort® Connector

### APPLICATION

The eXtreme Cat 5e Component-Rated UTP Connector is designed to be used with all Leviton QuickPort compatible products. The connector includes patented Retention Force Technology which promotes consistent performance over the life of the system. It includes unique pair separation towers allowing for quicker and easier terminations. The connector is in a 180-degree configuration with the punch field in the back, allowing for rear termination.



### SPECIFICATION

The connector shall meet or exceed the requirements for channel- and component-level performance described in the ANSI/TIA-568-C.2 Category 5e standard, as well as the Class D requirements described in ISO/IEC 11801. The connector shall be in a 180-degree configuration such that the punch field is in the back, allowing for rear termination. Rear termination field shall include pointed pair separation towers to promote easier installation. All plastics used in construction of the connector bodies shall be fire retardant with a UL flammability rating of 94V-0. Termination of all connectors shall be 110-type insulation displacement connectors (IDC). The connector shall provide a cutting ledge directly adjacent to the 110-style IDCs against which the wires can be directly terminated and cut in one action. Connector wiring shall be universal and accommodate both T568A and T568B wiring schemes.

### COUNTRY OF ORIGIN

USA

### FEATURES

- Terminates 26-22-gauge solid conductors
- Capable of multiple re-terminations
- Gas-tight IDC connectors prevent corrosion
- Dual-layer T568B/T568A wiring label simplifies punchdown
- Patented Retention Force Technology protects tines from damage and increases system longevity
- Pair Separation Tower design facilitates separation of conductors and minimizes untwisting
- 180-degree configuration allows for rear termination
- Available in 13 ANSI/TIA-606-B compatible colors for color coding or organization
- Available individually, in bulk packages of 25, and in bulk packages of 150 with a JackRapid™ Punchdown Tool

### DESIGN CONSIDERATIONS

- Use in any QuickPort housing to support eXtreme Cat 5e UTP connectivity in surface-mount, flush-mount, or modular furniture outlets and field-configurable panels
- Can be used in conjunction with other QuickPort snap-in modules for voice/data and video applications over UTP, coax, and fiber

### STANDARDS COMPLIANCE

- ANSI/TIA-568-C.2
- ISO/IEC 11801
- ANSI/TIA-1096-A (formerly FCC Part 68)
- cULus Listed
- IEEE 802.3at (Type 1) Power over Ethernet (PoE) up to 15.4 watts
- IEEE 802.3at (Type 2) PoE+ up to 30 watts
- IEEE 802.3bt (Type 3) PoE+ up to 60 watts
- Cisco Universal Power Over Ethernet (UPOE) up to 60 watts

### PHYSICAL SPECIFICATIONS

Dimensions: See page two

Materials: **Connector Body:** High-impact, fire-retardant plastic rated UL 94V-0

**Spring-Wire Contacts:** High-quality copper-based alloy, plated with 50 micro-inches of gold over 100 micro-inches of nickel for lowest electrical contact resistance and maximum life

Environmental

Conditions:

**Storage Temperature:** -40 °C to +70 °C

**Operating Temperature:** -10 °C to +60 °C

#### Leviton Network Solutions

2222 - 222nd St. SE  
Bothell, WA 98021-4416

tel 1-800-824-3005  
tel +1-425-486-2222  
appeng@leviton.com  
www.leviton.com

#### Asia / Pacific

T +1.631.812.6228  
E infoasean@leviton.com

#### Europe

T +44.0.1592.772124  
E customerservice@brand-rex.com

#### Canada

T +1.514.954.1840  
E pcservice@leviton.com

#### India / SAARC

T +971.4.886.4722  
E infoindia@leviton.com

#### Caribbean

T +1.954.593.1896  
E infocaribbean@leviton.com

#### Mexico

T +52.55.5082.1040  
E lsamarketing@leviton.com

#### China

T +852.2774.9876  
E infochina@leviton.com

#### Middle East & Africa

T +971.4.886.4722  
E lmeinfo@leviton.com

#### Colombia

T +57.1.743.6045  
E infocolombia@leviton.com

#### South Korea

T +82.2.3273.9963  
E infokorea@leviton.com

**WARRANTY INFORMATION**

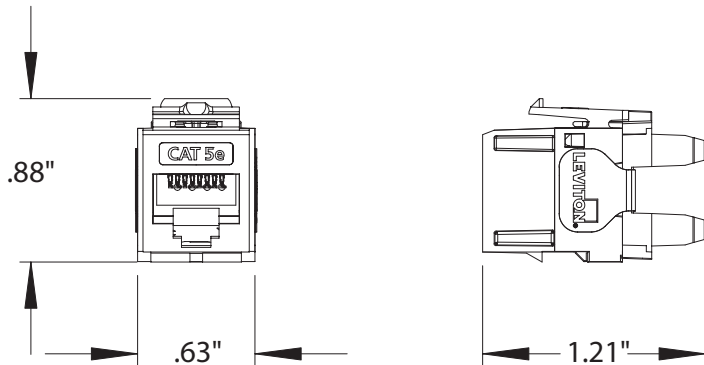
Limited product and limited extended warranties are rendered VOID if the installed structured cabling system is used for Power over Ethernet applications that exceed the product's specified power rating.

For a copy of Leviton product warranties, visit [www.leviton.com/warranty](http://www.leviton.com/warranty).

**ELECTRONIC FILES**

For CAD files, typical specs, or technical drawings (.DXF, .DWG), visit [www.leviton.com](http://www.leviton.com).

**5G110-xx5**



**PART NUMBERS**

Description	Connector	QuickPack 25/Bag	150/Bag with JackRapid™ Tool
eXtreme® Cat 5e Component-Rated UTP QuickPort® Connector, white	5G110-RW5	5G110-BW5	5G110-JW5
eXtreme Cat 5e Component-Rated UTP QuickPort Connector, light almond	5G110-RT5	5G110-BT5	5G110-JT5
eXtreme Cat 5e Component-Rated UTP QuickPort Connector, blue	5G110-RL5	5G110-BL5	5G110-JL5
eXtreme Cat 5e Component-Rated UTP QuickPort Connector, ivory	5G110-RI5	5G110-BI5	5G110-JI5
eXtreme Cat 5e Component-Rated UTP QuickPort Connector, yellow	5G110-RY5	5G110-BY5	5G110-JY5
eXtreme Cat 5e Component-Rated UTP QuickPort Connector, orange	5G110-RO5	5G110-BO5	5G110-JO5
eXtreme Cat 5e Component-Rated UTP QuickPort Connector, crimson	5G110-RC5	5G110-BC5	5G110-JC5
eXtreme Cat 5e Component-Rated UTP QuickPort Connector, dark red	5G110-RR5	5G110-BR5	5G110-JR5
eXtreme Cat 5e Component-Rated UTP QuickPort Connector, purple	5G110-RP5	5G110-BP5	5G110-JP5
eXtreme Cat 5e Component-Rated UTP QuickPort Connector, green	5G110-RV5	5G110-BV5	5G110-JV5
eXtreme Cat 5e Component-Rated UTP QuickPort Connector, grey	5G110-RG5	5G110-BG5	5G110-JG5
eXtreme Cat 5e Component-Rated UTP QuickPort Connector, black	5G110-RE5	5G110-BE5	5G110-JE5
eXtreme Cat 5e Component-Rated UTP QuickPort Connector, brown	5G110-RB5	5G110-BB5	5G110-JB5



<b>Leviton Network Solutions</b> 2222 - 222nd St. SE Bothell, WA 98021-4416  tel 1-800-824-3005 tel +1-425-486-2222 appeng@leviton.com www.leviton.com	<b>Asia / Pacific</b> T +1.631.812.6228 E infoasean@leviton.com	<b>Canada</b> T +1.514.954.1840 E pcservice@leviton.com	<b>Caribbean</b> T +1.954.593.1896 E infocaribbean@leviton.com	<b>China</b> T +852.2774.9876 E infochina@leviton.com	<b>Colombia</b> T +57.1.743.6045 E infocolombia@leviton.com
	<b>Europe</b> T +44.0.1592.772124 E customerservice@brand-rex.com	<b>India / SAARC</b> T +971.4.886.4722 E infoindia@leviton.com	<b>Mexico</b> T +52.55.5082.1040 E lsamarketing@leviton.com	<b>Middle East &amp; Africa</b> T +971.4.886.4722 E lmeinfo@leviton.com	<b>South Korea</b> T +82.2.3273.9963 E infokorea@leviton.com