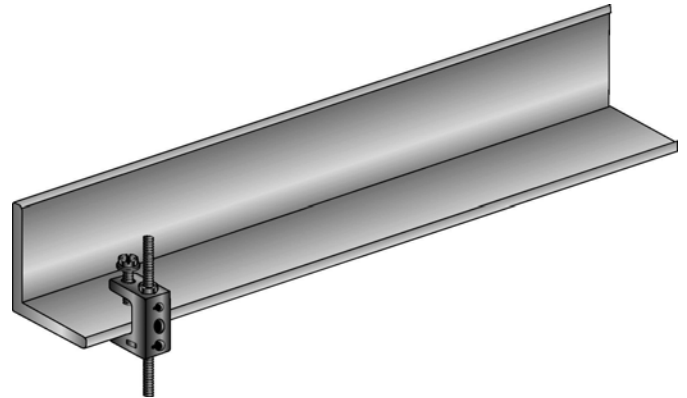
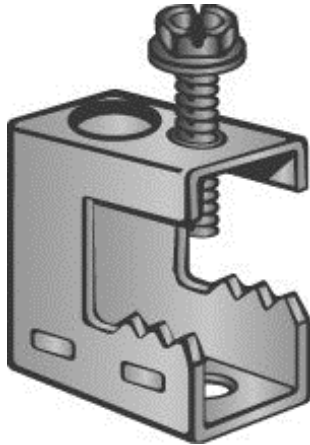


Part Number: PBC

Product Description: SCREW-ON BEAM CLAMP FOR UP TO 1/2" FLANGE - SPRING STEEL

**Material Specifications**

Type: High Carbon Steel, Spring Tempered

Finish: Zinc Phosphate and Oil

Color: Black

Function Specifications**Compatible Wires and Cables**

AC/MC CABLE (OD):

Drop Wire:

Plain Rod (in):

Threaded Rods and Bolts

Tapped Holes: 1/4-20 and #10-24

Clearance Holes (in): 3/8

Threaded Rod Size (in):

Compatible Conduit

EMT Size (in):

Rigid/IMC (in):

Compatible Flanges and Studs

Flange Size (in): Up to 1/2

Metal Stud Size (in):

Static Load Rating

Vertical (lbs): 100

Horizontal (lbs):

Other

1/4-20 (bottom & back) #10-24 (back), 3/8 rod requires nut

Codes and RegulatoryRegulatory
Certifications:

-

Country of Origin: US

Packaging

General Packaging: Cardboard Box

Box Size: 8.25 X 6.25 X 6

Pieces per Package: 100

Other Box Features:

Document Information

Created By: DBLA

Checked By: DJW

Approved By: KLN

Customer Specification #: C11101

Revision Level: 01

ECN #: GAECN01482

Date: 12/10/2013