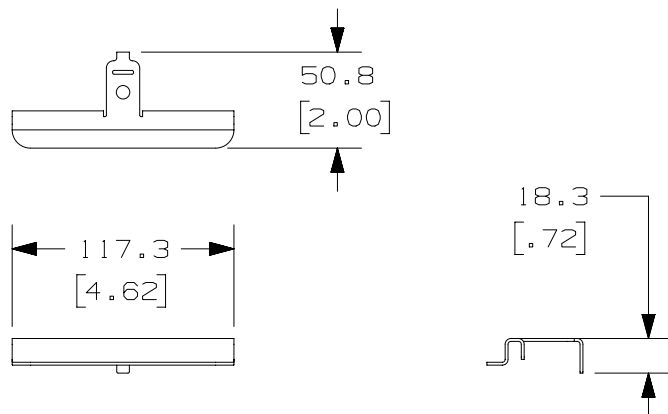


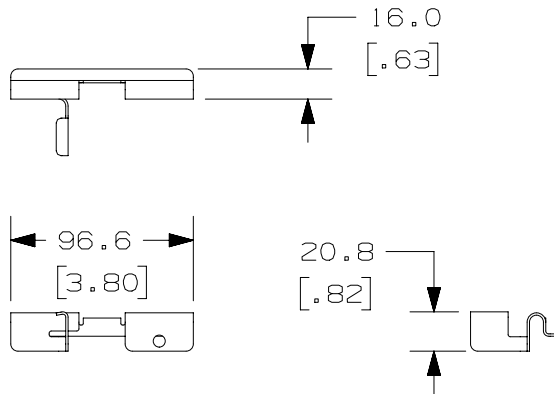
2

1

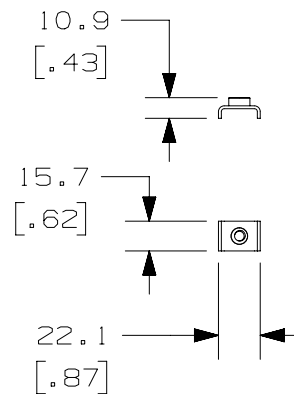
THIS COPY IS PROVIDED ON A RESTRICTED BASIS AND IS NOT TO BE USED IN ANY WAY DETRIMENTAL TO THE INTERESTS OF PANDUIT CORP.



SIDE SPLICE



CENTER SPLICE

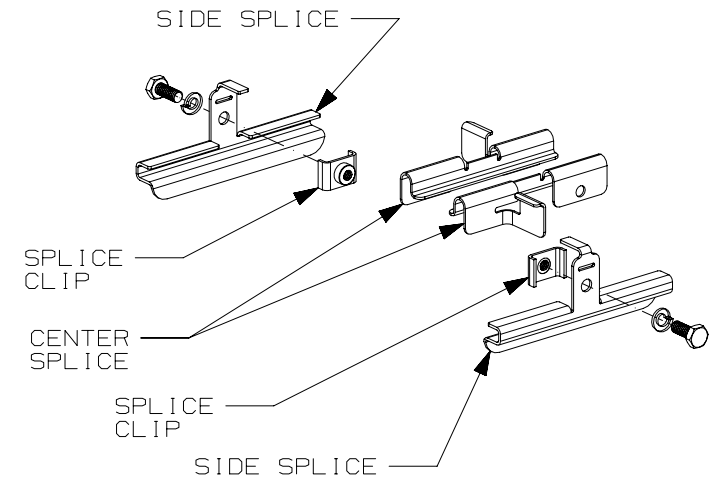


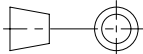
SPLICE CLIP

PANDUIT PART NUMBER	WEIGHT
WGESPL2430**	.48 LBS (217.7 g)

NOTES:

- SEE CURRENT CATALOG FOR ADDITIONAL PART SUFFIXES TO INDICATE PACKAGE QUANTITY.
- THE WYR-GRID SIDE SPLICE 2430 IS USED TO SPLICE TWO 24" OR 30" WIDE WYR-GRID PATHWAYS TOGETHER.
- THE WYR-GRID SIDE SPLICE 2430 PACKAGE CONTAINS THE FOLLOWING EACH STRUT CLIP CONSIST OF:  
TWO (2) WYR-GRID SIDE SPLICE  
TWO (2) WYR-GRID CENTER SPLICE  
TWO (2) WYR-GRID SPLICE CLIP  
TWO (2) 1/4 HELICAL SPRING LOCKWASHER  
TWO (2) 1/4-20 X 3/4" LONG HEX HEAD CAP SCREW
- ALL DIMENSIONS IN PARENTHESES ARE INCHES.
- THE BLACK VERSION OF THE PART WILL NOT PROVIDE A BONDED CONNECTION BETWEEN PATHWAY SECTIONS.



TITLE				WYR-GRID SPLICE W/ CLIP 24" & 30" WIDE (WGESPL2430**)			
				CUSTOMER DRAWING			
ITEM REVISION NAME				13D373BN/00			
DATASET FILE NAME				13D373BN_DC/00B			
				MATERIAL:			
				STEEL			
				DRAWING NUMBER:			
				1 3D373BN - DC			
DRAWN BY	DATE	CHK	SCALE	SIZE			
SSP	12-08-14	DWW	NONE	SHT 1 OF 1			
				A			

2

1

00B	8-3-15	LEE	DWR		RELEASED TO PRODUCTION	V09000LC
00A	12-08-14	SSP	DWW		DRAWING RELEASED	
REV	DATE	BY	CHK	APR	DESCRIPTION	ECN

D10100DA/16