

8 x 10 Steel TV Box™

NEW!
more on
reverse

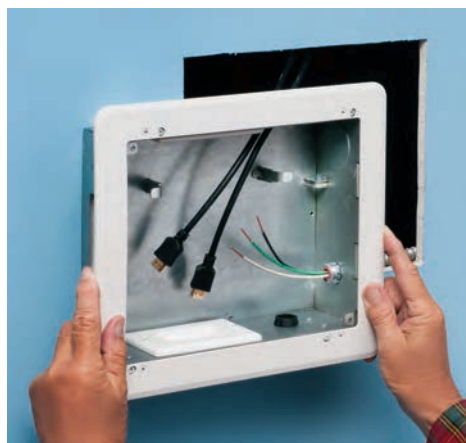
Installation Versatility • Perfect for TV Installations in a Commercial Setting



**Lots of space inside this steel box
for multiple low voltage connections...
and brackets for a neater installation**



Mounts to stud in NEW work



**In RETROFIT mounting wing
screws hold box secure in wall**

Patent pending

Arlington's TVBS810 **TV Box™** offers flexibility when installing wall-mount flat screen TVs in new construction or retrofit work. There's ample room in the box for wires. And, you can install the box horizontally or vertically to ensure proper positioning of low voltage connections behind the TV.

Available with a steel box, TVBS810 is ideal for theater system installations in a commercial setting. It handles the multiple connections needed for sound systems, satellite TV, cable TV, DVRs, and more.

- Accepts standard-style plates with receptacles and decorator-style devices with plates and Arlington's SCOOP™ series entrance plates and hoods
- In **new work** box mounts to a stud; in **retrofit** mounting wing screws hold box secure in the wall
- 1-1/2" knockout for low voltage, and other wiring
- Optional cover available for unused boxes
- cULus Listed

TVBS810



View Video



Arlington

1 Stauffer Industrial Park
Scranton, PA 18517

800/233.4717

Fax 570/562.0646

www.aifittings.com



8 x 10 Steel TV BOX™

NEW!

Install Vertically or Horizontally in New or Retrofit Commercial Work

Easy installation in **New Work...**



Mount box to stud, using tabs for proper positioning.



Positioning tabs are set for 1/2" or 5/8" drywall.

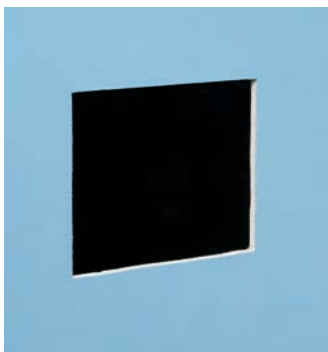


Attach plastic, paintable trim plate with screws provided.



Tighten mounting wing screws to pull box securely against the wall.

...or **Retrofit**



Determine placement of box. Cut opening in wall.



Install trim plate on box. Pull wire. Insert assembly into opening.



Pull cable. Tighten mounting wing screws to pull box securely against wall.

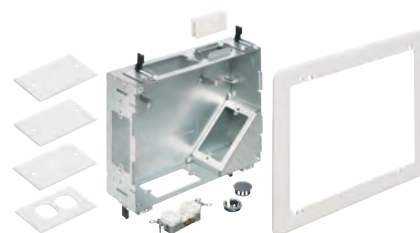


A Mounting wing screws (inside set)
B Trim plate screws (outside set)

View Video



Catalog Number	UPC/DEI/NAED Mfg. #018997	Description	Unit/Std Pkg
TVBS810	09757	Steel power/low voltage box 8x10 TV BOX™ Includes steel box, plastic trim plate, duplex receptacle, line voltage box, wall plates, SCOOP™ cable entry device, knockout plugs for unused openings	1
TVBU810	09758	Non-metallic power/low voltage box	1
TVBU810GC	13631	Non-metallic power/low voltage box Includes ground clip for Canada	1
TVB810C	24193	Paintable Cover for TVBU810 and TVBS810 boxes	1/10



TVBS810 Components



TVB810C
Cover
on TVBS810

Patent pending



TVBS810 Installed



1 Stauffer Industrial Park
Scranton, PA 18517
800/233.4717
Fax 570/562.0646
www.aifittings.com

Distributed by