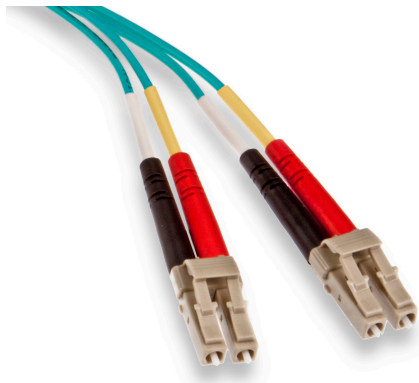


Economy Series Fiber Optic Patch Cords

APPLICATION

Leviton Fiber Optic Patch Cords are designed to interconnect or cross connect fiber networks within structured cabling systems. Leviton can produce any standard or custom fiber patch cord to meet your needs, and can offer quick-turn services for fast delivery. Leviton offers two series of patch cords: Premium Series and Economy Series. Premium Series Patch Cords offer higher performance, optional custom labels, and optional 100% interferometer testing. Economy Series Patch Cords are a price-competitive stocked or custom ordered solution that meets or exceeds all industry standards.



Economy Series
 LC-LC Duplex, OM3 LOMM

SPECIFICATION

Multimode patch cords shall meet an optical return loss equal to or greater than 25 dB per mated pair, and single-mode equal to or greater than 50 dB for UPC polish, or 55 dB for APC polish. Insertion loss shall not exceed 0.4 dB per mated pair for multimode and 0.35 dB for single-mode. The patch cords shall be compliant with ANSI/TIA-568.3-D.

FEATURES

- Available in duplex configurations
- Simplex configurations available as custom
- Industry-standard connector options
- All cables 100% optically tested
- Many fiber options: OM1, OM2, OM3, OM4, and OS2
- All cords are pre-labeled and individually bagged

DESIGN CONSIDERATIONS

- Offered in SC, ST, LC, or hybrid options
- All connectors have precision pre-radiused zirconia ferrules
- ST connectors have metal bodies
- Duplex clips included
- Single-mode SC available in UPC or APC
- Patch cord cable is riser rated (LSZH is available with minimum order quantity and longer lead times. Contact customer service.)
- Standard polarity is A-B

STANDARDS & REGULATIONS

- ANSI/TIA-568.3-D

COUNTRY OF ORIGIN

China

WARRANTY INFORMATION

For Leviton product warranties, go to leviton.com/warranty

COLOR CODES

Cable Jackets

Single-mode (OS2)	Yellow
Multimode (62.5/125 μm, OM1)	Orange
Multimode (50/125 μm, OM2)	Orange
Laser optimized multimode (50/125 μm, OM3/OM4)	Aqua

Connector Body

Single-mode	Blue
Single-mode, APC (angle polishing)	Green
Multimode (62.5/125 μm)	Beige
Multimode (50/125 μm)	Beige
Laser optimized multimode (50/125 μm)	Beige

Boots (Polarity defined by the following color scheme)

Single-Mode	Yellow and White
Multimode	Black and Red

PERFORMANCE SPECIFICATIONS

	Multimode	Single-mode
Insertion Loss	0.4 dB Max	0.35 dB Max
Return Loss	>25 dB	>50 dB (UPC), >55 dB (APC)
Durability	500 Matings	500 Matings
Repeatability	<0.2 dB	<0.2 dB
Operating Environment	-40° C to 75° C	-40° C to 75° C
Cable Retention	>20lbs / 89 N	>20lbs / 89 N
RoHS	Yes	Yes

PRODUCT SPECIFICATIONS
Economy Series Fiber Optic Patch Cords



PERFORMANCE SPECIFICATIONS (CONT.)

Cable Performance

Fiber Type	Maximum Attenuation (db/km)				Bandwidth (MHz•km)		Transmission Distance (meters)				
	850nm	1300nm	1310nm	1550nm	850nm	1300nm	100Mb	1GbE	10GbE	40GbE	10GbE
Single-mode (OS2)	N/A	N/A	0.4	0.3	N/A	N/A	>5,000 @ 1310nm		>10,000 @ 1310nm	NA	NA
62.5/125 µm MM (OM1)	3.5	1.0	N/A	N/A	200	500	300/2000 @ 850/1300nm	300/600 @ 850/1300nm	36/300 @ 850/1300nm	NA	NA
50/125 µm MM (OM2)	3.0	1.0	N/A	N/A	950	500		750/600 @ 850/1300nm	150/300 @ 850/1300nm	NA	NA
50/125 µm LO (10G-300m) MM (OM3)	3.0	1.0	N/A	N/A	2,000 ¹	500 ²		1,000/600 @ 850/1300nm	300/300 @ 850/1300nm	100 @ 850nm	100 @ 850nm
50/125 µm LO (10G-550m) MM (OM4)	3.0	1.0	N/A	N/A	4,900 ¹	500 ²		1,210/600 @ 850/1300nm	600/300 @ 850/1300nm	150 @ 850nm	150 @ 850nm

¹ The effective modal bandwidth is determined based on an overfill launch (OFL) per ANSI/TIA-455-204, except on laser-optimized fiber types.

² 10GbE transmission @ 1,300 nm only applies to 10GBASE-LX4 (CWDM).

Economy Series Fiber Optic Patch Cords

62.5/125 µm MULTIMODE (OM1) OFNR DUPLEX

Description	Length (Meters)	Duplex
SC-SC	1	62DSC-M01
SC-SC	2	62DSC-M02
SC-SC	3	62DSC-M03
SC-SC	5	62DSC-M05
SC-SC	10	62DSC-M10
ST-ST	1	62DST-M01
ST-ST	2	62DST-M02
ST-ST	3	62DST-M03
ST-ST	5	62DST-M05
ST-ST	10	62DST-M10
LC-LC	1	62DLC-M01
LC-LC	2	62DLC-M02
LC-LC	3	62DLC-M03
LC-LC	5	62DLC-M05
LC-LC	10	62DLC-M10
SC-ST	1	62DCT-M01
SC-ST	2	62DCT-M02
SC-ST	3	62DCT-M03
SC-ST	5	62DCT-M05
SC-ST	10	62DCT-M10
SC-LC	1	62DCL-M01
SC-LC	2	62DCL-M02
SC-LC	3	62DCL-M03
SC-LC	5	62DCL-M05
SC-LC	10	62DCL-M10

50/125 µm MULTIMODE (OM2) OFNR DUPLEX

Description	Length (Meters)	Duplex
SC-SC	1	50DSC-M01
SC-SC	2	50DSC-M02
SC-SC	3	50DSC-M03
SC-SC	5	50DSC-M05
SC-SC	10	50DSC-M10
ST-ST	1	50DST-M01
ST-ST	2	50DST-M02
ST-ST	3	50DST-M03
ST-ST	5	50DST-M05
ST-ST	10	50DST-M10
LC-LC	1	50DLC-M01
LC-LC	2	50DLC-M02
LC-LC	3	50DLC-M03
LC-LC	5	50DLC-M05
LC-LC	10	50DLC-M10
SC-LC	1	50DCL-M01
SC-LC	2	50DCL-M02
SC-LC	3	50DCL-M03
SC-LC	5	50DCL-M05
SC-LC	10	50DCL-M10

PRODUCT SPECIFICATIONS
Economy Series Fiber Optic Patch Cords



9/125 MM SINGLE-MODE (OS2) OFNR DUPLEX		
Description	Length (Meters)	Duplex
SC-SC	1	UPDSC-S01
SC-SC	2	UPDSC-S02
SC-SC	3	UPDSC-S03
SC-SC	5	UPDSC-S05
SC-SC	10	UPDSC-S10
LC-LC	1	UPDLC-S01
LC-LC	2	UPDLC-S02
LC-LC	3	UPDLC-S03
LC-LC	4	UPDLC-S04
LC-LC	5	UPDLC-S05
LC-LC	6	UPDLC-S06
LC-LC	10	UPDLC-S10
SC-LC	1	UPDCL-S01
SC-LC	2	UPDCL-S02
SC-LC	3	UPDCL-S03
SC-LC	5	UPDCL-S05
SC-LC	10	UPDCL-S10
ST-ST	1	UPDST-S01
ST-ST	2	UPDST-S02
ST-ST	3	UPDST-S03
ST-ST	10	UPDST-S10
SC-ST	1	UPDCT-S01
SC-ST	2	UPDCT-S02
SC-ST	3	UPDCT-S03
SC-ST	10	UPDCT-S10

APC SINGLE-MODE (OS2) SIMPLEX		
Description	Length (Meters)	SIMPLEX
SC-SC	1	APSSC-S01
SC-SC	2	APSSC-S02
SC-SC	3	APSSC-S03
SC-SC	5	APSSC-S05
SC-SC	10	APSSC-S10

50/125 μm LOMM (OM3) OFNR DUPLEX		
Description	Length (Meters)	duplex
SC-SC	1	5LDSC-M01
SC-SC	2	5LDSC-M02
SC-SC	3	5LDSC-M03
SC-SC	5	5LDSC-M05
SC-SC	10	5LDSC-M10
LC-LC	1	5LDLC-M01
LC-LC	2	5LDLC-M02
LC-LC	3	5LDLC-M03
LC-LC	4	5LDLC-M04
LC-LC	5	5LDLC-M05
LC-LC	7	5LDLC-M07
LC-LC	9	5LDLC-M09
LC-LC	10	5LDLC-M10
LC-LC	12	5LDLC-M12
LC-LC	15	5LDLC-M15
SC-LC	1	5LDCL-M01
SC-LC	2	5LDCL-M02
SC-LC	3	5LDCL-M03
SC-LC	5	5LDCL-M05
SC-LC	10	5LDCL-M10

50/125 μm LOMM (OM4) OFNR DUPLEX		
Description	Length (Meters)	duplex
LC-LC	1	54DLC-M01
LC-LC	2	54DLC-M02
LC-LC	3	54DLC-M03
LC-LC	4	54DLC-M04
LC-LC	5	54DLC-M05
LC-LC	6	54DLC-M06
LC-LC	7	54DLC-M07
LC-LC	8	54DLC-M08
LC-LC	9	54DLC-M09
LC-LC	10	54DLC-M10
LC-LC	12	54DLC-M12
LC-LC	15	54DLC-M15
SC-LC	1	54DCL-M01
SC-LC	2	54DCL-M02
SC-LC	3	54DCL-M03
SC-LC	4	54DCL-M04
SC-LC	5	54DCL-M05
SC-LC	10	54DCL-M10
SC-SC	1	54DSC-M01
SC-SC	4	54DSC-M04
SC-SC	10	54DSC-M10



For further support information, visit leviton.com/ns/support

NETWORK SOLUTIONS GLOBAL HEADQUARTERS

Bothell, WA, USA | leviton.com/ns
 (800) 824 3005 / +1 (425) 486 2222 | appeng@leviton.com

NETWORK SOLUTIONS EUROPEAN HEADQUARTERS

Glenrothes, UK | leviton.com/ns/emea
 +44 (0) 1592 772124 | customerserviceeu@leviton.com

Leviton is dedicated to designing, developing and manufacturing sustainable high-performance structured cabling and speciality cabling solutions. Network Solutions products are available worldwide in over 100 countries. Visit us online to learn more.