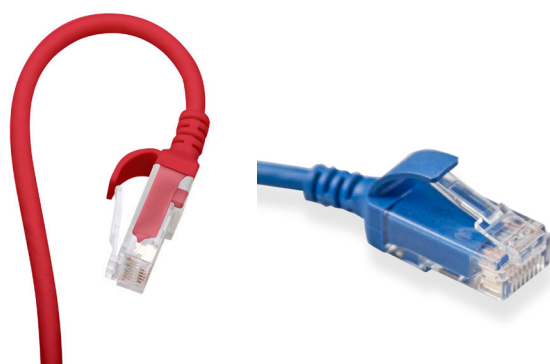


## eXtreme™ Cat 6 High-Flex Patch Cords

### APPLICATION

eXtreme High-Flex Cat 6 Patch Cords are designed to be used in Cat 6 / 1-Gigabit applications and all frequencies from 1 to 250 MHz. Patch cords offer flexible, high-density patching. Cables support high-speed data applications. They reduce patch cord density in a 24-port patch panel by 38 percent when compared to typical Cat 6 patch cords.



### SPECIFICATION

Patch cords shall provide 1 Gigabit application performance for cross connecting in systems comprising of equipment, cable, and appropriate connectors. The patch cords shall be 28-gauge, unshielded, twisted-pair, stranded conductor construction with a standard 8-position modular plug on both ends. Plug contacts shall be plated with minimum of 50 micro inches of gold and rated to 2,500 mating cycles. Patch cords shall have an outer diameter of 0.15 inches (3.8mm) and shall be available in white, yellow, gray, black, red, green, and blue.

### FEATURES

- Available in white, yellow, gray, black, red, green, and blue
- Available in stock lengths of 6 inches (0.15m) or 1-20 feet (0.30 - 6.0m) in 1-foot (0.3m) increments
- Power over Ethernet (PoE and PoE+) compatible
- Accommodate use in high-density switches, routers, and other electronics
- Bend radius is a narrow 0.60 inches (15.2mm), versus 1.0 inch (25.4mm) for typical Cat 6 patch cords
- Snagless plug design with integrated strain-relief boot
- Plug contacts rated to 2,500 mating cycles
- Dual-rated cable jacket (CM/LSZH)

### DESIGN CONSIDERATIONS

- Designed to provide connectivity for Cat 6 / 1-Gigabit applications
- Available in a variety of colors for color coding or organization
- Channel Length:
  - Supports 96-m channels that include 90-m permanent links
  - Supports 93-m channels with 10 m of patch cords included in the channel
- Under PoE at 90 watts, maximum bundle size is 12 cables with a separation of 1.5 inches from outer edge to outer edge of cable bundles for 28 AWG cables installed in air and a maximum ambient temperature of 45 °C (113 °F), as defined in TIA TSB-184-A

### STANDARDS & REGULATIONS

- ANSI/TIA-568.2-D Cat 6
- ISO/IEC 11801-1 Class E
- EN 50173-1 Class E
- ANSI/TIA-1096-A (formerly FCC Part 68)
- RoHS 2 compliant
- UL 444 - CM
- IEC 60332-1 [1,2] (2004-07), 60754, 61034
- IEEE 802.3bt PoE: Type 1 (15.4 W) formerly 802.3af, Type 2 (30 W) formerly 802.3at, Type 3 (60 W), Type 4 (90 W)
- Cisco UPoE (60 W), UPoE+ (90 W)
- Power over HDBaseT™ PoH (95 W)

### MECHANICAL SPECIFICATIONS

Dimensions:	1-20 feet (0.30 - 6.0m) in 1-foot (0.3m) increments
Materials:	28-gauge, stranded UTP, standard modular non-keyed, 8-position, 8-conductor plug, 94V-0 rated
Cable Outer Diameter:	0.15 inches (3.8mm)
Bend Radius:	0.60 inches (15.2mm)
Temperature (Installation):	0 °C to +50 °C
Temperature (Operating):	-20 °C to +60 °C

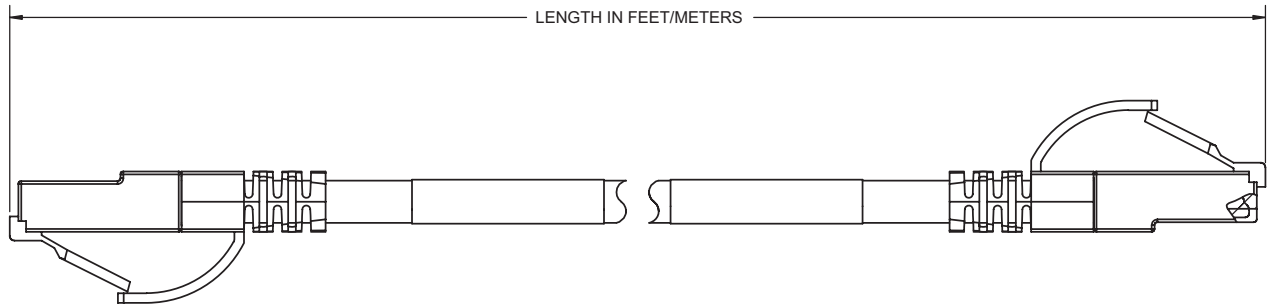
### WARRANTY INFORMATION

For Leviton product warranties, go to [leviton.com/warranty](http://leviton.com/warranty)

**PRODUCT SPECIFICATIONS**  
**6H460-XX\***



**6H460-XX\***



EXTREME™ HIGH-FLEX CAT 6 PATCH CORDS							
Description	White	Yellow	Red	Blue	Green	Gray	Black
High-Flex Cat 6 Patch Cord, 0.5 feet (0.15 m)	6H460-6iW	6H460-6iY	—	6H460-6iL	—	6H460-6iS	—
High-Flex Cat 6 Patch Cord, 1 foot (0.3 m)	6H460-01W	6H460-01Y	6H460-01R	6H460-01L	6H460-01G	6H460-01S	6H460-01E
High-Flex Cat 6 Patch Cord, 2 feet (0.6 m)	6H460-02W	6H460-02Y	6H460-02R	6H460-02L	6H460-02G	6H460-02S	6H460-02E
High-Flex Cat 6 Patch Cord, 3 feet (0.9 m)	6H460-03W	6H460-03Y	6H460-03R	6H460-03L	6H460-03G	6H460-03S	6H460-03E
High-Flex Cat 6 Patch Cord, 4 feet (1.2 m)	6H460-04W	6H460-04Y	6H460-04R	6H460-04L	6H460-04G	6H460-04S	6H460-04E
High-Flex Cat 6 Patch Cord, 5 feet (1.5 m)	6H460-05W	6H460-05Y	6H460-05R	6H460-05L	6H460-05G	6H460-05S	6H460-05E
High-Flex Cat 6 Patch Cord, 6 feet (1.8 m)	6H460-06W	6H460-06Y	6H460-06R	6H460-06L	6H460-06G	6H460-06S	6H460-06E
High-Flex Cat 6 Patch Cord, 7 feet (2.1 m)	6H460-07W	6H460-07Y	6H460-07R	6H460-07L	6H460-07G	6H460-07S	6H460-07E
High-Flex Cat 6 Patch Cord, 8 feet (2.4 m)	6H460-08W	6H460-08Y	6H460-08R	6H460-08L	6H460-08G	6H460-08S	6H460-08E
High-Flex Cat 6 Patch Cord, 9 feet (2.7 m)	6H460-09W	6H460-09Y	6H460-09R	6H460-09L	6H460-09G	6H460-09S	6H460-09E
High-Flex Cat 6 Patch Cord, 10 feet (3.0 m)	6H460-10W	6H460-10Y	6H460-10R	6H460-10L	6H460-10G	6H460-10S	6H460-10E
High-Flex Cat 6 Patch Cord, 11 feet (3.4 m)	6H460-11W	6H460-11Y	6H460-11R	6H460-11L	6H460-11G	6H460-11S	6H460-11E
High-Flex Cat 6 Patch Cord, 12 feet (3.7 m)	6H460-12W	6H460-12Y	6H460-12R	6H460-12L	6H460-12G	6H460-12S	6H460-12E
High-Flex Cat 6 Patch Cord, 13 feet (4.0 m)	6H460-13W	6H460-13Y	6H460-13R	6H460-13L	6H460-13G	6H460-13S	6H460-13E
High-Flex Cat 6 Patch Cord, 14 feet (4.3 m)	6H460-14W	6H460-14Y	6H460-14R	6H460-14L	6H460-14G	6H460-14S	6H460-14E
High-Flex Cat 6 Patch Cord, 15 feet (4.6 m)	6H460-15W	6H460-15Y	6H460-15R	6H460-15L	6H460-15G	6H460-15S	6H460-15E
High-Flex Cat 6 Patch Cord, 16 feet (4.9 m)	6H460-16W	6H460-16Y	6H460-16R	6H460-16L	6H460-16G	6H460-16S	6H460-16E
High-Flex Cat 6 Patch Cord, 17 feet (5.2 m)	6H460-17W	6H460-17Y	6H460-17R	6H460-17L	6H460-17G	6H460-17S	6H460-17E
High-Flex Cat 6 Patch Cord, 18 feet (5.5 m)	6H460-18W	6H460-18Y	6H460-18R	6H460-18L	6H460-18G	6H460-18S	6H460-18E
High-Flex Cat 6 Patch Cord, 19 feet (5.8 m)	6H460-19W	6H460-19Y	6H460-19R	6H460-19L	6H460-19G	6H460-19S	6H460-19E
High-Flex Cat 6 Patch Cord, 20 feet (6.1 m)	6H460-20W	6H460-20Y	6H460-20R	6H460-20L	6H460-20G	6H460-20S	6H460-20E
High-Flex Cat 6 Patch Cord, 25 feet (7.6 m)	—	—	—	6H460-25L	—	—	—
High-Flex Cat 6 Patch Cord, 30 feet (9.1 m)	—	—	—	6H460-30L	—	—	—
High-Flex Cat 6 Patch Cord, 35 feet (10.7 m)	—	—	—	6H460-35L	—	—	—
High-Flex Cat 6 Patch Cord, 40 feet (12.1 m)	—	—	—	6H460-40L	—	—	—
High-Flex Cat 6 Patch Cord, 50 feet (15.2 m)	—	—	—	6H460-50L	—	—	—

For further support information, visit [leviton.com/ns/support](http://leviton.com/ns/support)



**NETWORK SOLUTIONS GLOBAL HEADQUARTERS**  
Bothell, WA, USA | [leviton.com/ns](http://leviton.com/ns)  
(800) 824 3005 / +1 (425) 486 2222 | [appeng@leviton.com](mailto:appeng@leviton.com)

**NETWORK SOLUTIONS EUROPEAN HEADQUARTERS**  
Glenrothes, UK | [leviton.com/ns/emea](http://leviton.com/ns/emea)  
+44 (0) 1592 772124 | [customerserviceeu@leviton.com](mailto:customerserviceeu@leviton.com)

Leviton is dedicated to designing, developing and manufacturing sustainable high-performance structured cabling and speciality cabling solutions. Network Solutions products are available worldwide in over 100 countries. Visit us online to learn more.